

Automobiles on Steroids: Product Attribute Trade-Offs and Technological Progress in the Automobile Sector

By CHRISTOPHER R. KNITTEL*

This paper estimates the technological progress that has occurred since 1980 in the automobile industry and the trade-offs faced when choosing between fuel economy, weight, and engine power characteristics. The results suggest that if weight, horsepower, and torque were held at their 1980 levels, fuel economy could have increased by nearly 60 percent from 1980 to 2006. Once technological progress is considered, meeting the CAFE standards adopted in 2007 will require halting the trend in weight and engine power characteristics, but little more. In contrast, the standards recently announced by the new administration, while attainable, require non-trivial “downsizing”. JEL: Keywords:

The transportation sector accounts for over 30 percent of US greenhouse gas emissions. Despite this, the US has done little over the past 25 years to incentivize increases in passenger automobile fuel economy. Corporate Average Fuel Economy (CAFE) standards for passenger cars have not increased since 1990. For light trucks and SUVs, they have grown by only 10 percent since 1990. CAFE standards increased substantially for passenger vehicles from 1978 to 1990, but the shift from passenger cars to light trucks and SUVs meant the sales-weighted CAFE standard has changed little since 1983. In contrast to European policy-makers, US policy-makers have also been reluctant to incentivize carbon reductions through either gasoline or carbon taxes. This coupled with lower oil prices led to a 30 percent *reduction* in real gasoline prices from 1980 to 2004. While rapid increases in gas prices appear to have led to a shift to fuel economy from 2006 to 2008, gasoline prices did not include the externality costs of climate change and other externalities.¹

The lack of either pricing mechanisms or standards has meant US fleet fuel economy has been stagnant despite apparent technological advances. From 1980 to 2004 the average fuel economy of the US new passenger automobile fleet increased by less than 6.5 percent. During this time, the average horsepower of new passenger cars increased by 80 percent, while the average curb weight increased by 12 percent. Changes in light duty trucks have been even more pronounced. Average horsepower increased by 99 percent and average weight increased by 26 percent from 1984 to 2004. In addition, the change *within* passenger cars and light trucks hides much of the story. In 1980 light trucks sales were

* This paper has benefitted from conversations with Severin Borenstein, K.G. Duleep, David Greene, Jonathan Hughes, Mark Jacobsen, Doug Miller, David Rapson, Ken Small, Anson Soderbery, Dan Sperling, Nathan Wilmot, Frank Wolak, and Catherine Wolfram, as well as seminar participants at Stanford, MIT, UC Davis, and the UC Energy Institute. Tom Blake, Omid Rouhani and Anson Soderbery provided excellent research assistance. Financial support from the California Air Resource Board and the Institute of Transportation Studies at UC Davis is gratefully acknowledged. I am grateful to K.G. Duleep for providing me with data. *Affiliations:* William Barton Rogers Professor of Energy Economics, Sloan School of Management, Massachusetts Institute of Technology, 100 Main Street, Cambridge, MA 02142, and NBER, *email:* knittel@mit.edu.

¹See Meghan Busse, Christopher R. Knittel and Florian Zettelmeyer (2009) for a detailed study of how gas prices affected fuel economy. These changes are also evident in the aggregate data. New car fleet fuel economy increased by roughly 10 percent from 2004 to 2008, a period where gasoline prices increased by over 70 percent.

roughly 20 percent of total passenger vehicles sales; in 2004, they were over 51 percent.

These changes in vehicle characteristics are driven by consumer preferences and shifts in the weight/power/fuel economy iso-cost function. A large literature focuses on estimating consumer preferences for fuel economy and power characteristics measured as either horsepower, torque, or acceleration.² The goal of this paper is to better understand the technological trade-offs that manufacturers and consumers face when choosing between fuel economy, weight, and engine power characteristics, as well as how this relationship has changed over time. The results serve as a guide as to how the market may respond to increases in CAFE standards or a carbon tax, as well as how far regulatory standards can push fleet fuel economy.

Using detailed model-level data from 1980 to 2006, I answer two related questions. One, how would fuel economy today compare to fuel economy in 1980 if we had held size and power constant? And two, how would new fleet fuel economy look in the future if we were to continue to progress at rates observed in the data?

The results suggest that if weight, horsepower, and torque were held at their 1980 levels, fuel economy for both passenger cars and light trucks *could have* increased by nearly 60 percent from 1980 to 2006. This is in stark contrast to the 15 percent by which fuel economy actually increased. Technological progress was most rapid during the early 1980s, a period where CAFE standards were rapidly increasing and gasoline prices were high. This is consistent with the results of Richard G. Newell, Adam B. Jaffe and Robert N. Stavins (1999) and David Popp (2002) which find that the rate of energy efficiency innovation depends on both energy prices (Newell, Jaffe, and Stavins and Popp) and regulatory standards (Newell, Jaffe, and Stavins).

The estimated trade-off between weight and fuel economy suggests that, for passenger cars, fuel economy increases by over 4 percent for every 10 percent reduction in weight. On average, fuel economy increases by 2.7 percent for every 10 percent reduction in horsepower. The effect of torque is less precisely estimated. For light duty trucks, weight reductions of 10 percent are associated with increases in fuel economy of 3.6 percent, and a 10 percent increase in torque is correlated with a 3 percent increase in fuel economy. The association with horsepower is not precisely estimated.

The results shed light on the changes in vehicle attributes and rates of technological progress required to meet the CAFE standards recently adopted by both the Bush and Obama Administrations. The Bush CAFE standards call for an economy-wide average fuel efficiency of 35 MPG by 2020; the Obama standards call for an average fuel economy of 35.5 MPG by 2016. I use the above estimates to calculate new fleet fuel economy in 2020 and 2016 varying: (a) the rate of technological progress, (b) average vehicle weight and engine power, and (c) the passenger car to light truck ratio. I find that meeting the Bush standards will not require large behavioral changes, but will require halting the rate of growth in engine power and weight. In particular, if we continue with the average estimated rate of technological progress and current car/truck mix, the standard can be met by reversing the increase in weight and engine power that has occurred since 1980 by less than 25 percent.³ Alternatively, shifting the car to truck ratio back to levels observed

²For example, see such seminal papers as Pinelopi K. Goldberg (1995) and Steven Berry, James Levinsohn and Ariel Pakes (1995). Typically, the influence of gasoline prices is not the focus of these papers. Two exceptions are Thomas Klier and Joshua Linn (2008) and James W. Sawhill (2008).

³If we infer causality for the above trade-offs, this can be met by either altering the makeup of existing vehicles or shifting which vehicles are purchased. If the above trade-offs are viewed as simply correlations, then this

in the 1980s will exceed the standard by roughly 2 MPGs. The results also suggest that reducing weight and engine power characteristics to their 1980 levels combined with rates of technological progress that were typical during the increases in CAFE standards in the early 1980s lead to fleet fuel economy over 52 MPG by 2020.

Meeting the Obama standards will require “downsizing” of fleet attributes, although the standards are certainly attainable. With average rates of technological progress, new vehicle fleet fuel economy can reach 35.5 MPG by shifting the car/truck mix to their 1980 levels while at the same time reversing the weight and power characteristic gains since 1980 by 25 percent. Alternatively, the car/truck mix can remain constant, but weight and power be reduced by roughly 50 percent of the gains since 1980. A mixture of these two extremes is also possible. With rapid technological progress along with aggressive shifts in the car/truck mix and downsizing, fleet fuel economy can reach over 47 MPG by 2016.

To be clear, these results do not speak to the social welfare implications of the two CAFE standards or predict equilibria. Rather, the results uncover how fleet fuel economy varies car/truck mixtures and changes in power and weight characteristics for given levels of technological progress. Viewed in this way, these calculations complement work by Pinelopi Koujianou Goldberg (1998) which estimates the effects of CAFE standards on equilibrium outcomes in the short run, i.e., when vehicle attributes and technology are fixed. Therefore, in her paper CAFE compliance relies on pricing strategies that shift the relative quantities of existing vehicles.

The remainder of the paper is organized as follows. Section I discusses the theoretical and empirical models. In Section II, I discuss the sources of technological progress in the automobile industry. Section III discusses the data. Section IV provides graphical evidence of both trade-offs and technological progress. In Section V, I discuss the empirical results, including estimated trade-offs, technological progress and compliance strategies for the new CAFE standards. Section VI estimates alternative models and investigates robustness. In Section VII, I provide evidence that the results are not driven by either within-year or cross-year changes in how much manufacturers spend on engine technology. Finally, Section VIII concludes the paper.

I. Theoretical and Empirical Models

Underlying the empirical work is a marginal cost function for producing a vehicle at time t with a given level of fuel economy, mpg_{it} , horsepower, hp_{it} , torque, tq_{it} , other attributes related to fuel economy, X_{it} , and attributes related to other aspects of the vehicle, Z_{it} . I represent this as:

$$(1) \quad c_{it} = C(mpg_{it}, w_{it}, hp_{it}, tq_{it}, \mathbf{X}_{it}, \mathbf{Z}_{it}, t)$$

One method for estimating technological progress is to estimate how this function has changed over time. This is difficult for two reasons. First, the dimension of the Z_{it} vector required to adequately control for changes in vehicle attributes across other dimensions is large. Second, marginal cost data are not available. An obvious proxy are price data; however, given the numerous changes in the industrial structure of the auto industry a

represents shifting which vehicles, among those vehicles that are already offered, are purchased.

concern is that estimates of technological progress would also capture changes in mark-ups over time. Instead, I focus on the level sets of the marginal cost function.

I assume that the marginal cost function is additively separable in $(mpg_{it}, w_{it}, hp_{it}, t_{it}, \mathbf{X}_{it})$ and \mathbf{Z}_{it} , yielding:

$$(2) \quad c_{it} = C^1(mpg_{it}, w_{it}, hp_{it}, tq_{it}, \mathbf{X}_{it}, t) + C^2(\mathbf{Z}_{it}, t)$$

The C^2 function captures components of the marginal cost function that are unrelated to fuel economy, such as interior quality, options like air-conditioning (which do not affect the EPA fuel economy rating), etc. The level sets of C^1 are given as:

$$(3) \quad mpg_{it} = f(w_{it}, hp_{it}, t_{it}, \mathbf{X}_{it}, t | C^1 = \sigma)$$

Technological progress is modeled as “input” neutral in the sense that it is multiplicative to the function relating fuel economy with power and weight, yielding:⁴

$$(4) \quad mpg_{it} = T_t f(w_{it}, hp_{it}, t_{it}, \mathbf{X}_{it}, \epsilon_{it} | C^1 = \sigma)$$

A. Additional Factors

Consistent estimation of the level sets and how they have changed over time due to technological progress requires that the value of C^1 does not vary over time or within year. Put differently, the value of C^1 is in the error term in the empirical specification. Omitting expenditures on technology from the empirical model may lead to two sources of bias. First, if the goal is to estimate how the level sets have changed over time, *holding how much is devoted to technology constant*, then the estimated shifts in the level sets will be biased. The direction of the bias is unknown. If firms have increased the amount spent on these technologies over time, then the shifts will reflect both technological progress and this increase. In contrast, if firms have reduced expenditures on technology over time, the shifts will understate technological progress. The second source of bias may come from within-year variation in the cost devoted to technologies, if this variation is correlated with one of the characteristics. This would bias the estimates of the engineering relationship between fuel economy and engine power or weight.

Section VII provides detailed evidence that these biases are likely small by including a number of proxies for technological expenditures in the empirical models. I also note that, for much of the analysis, assuming shifts in the level sets reflect only technological progress is not required. Specifically, I use the estimates to answer two related questions. One, how would fuel economy today compare to fuel economy in 1980 if we had held size and power constant? And two, how would new fleet fuel economy look in the future if we were to continue to progress at rates observed in the data? Insofar as the observed increase in fuel economy captures both shifts in the level sets due to technological progress and increases in how much firms are devoting to technology, the results should be interpreted in this light. That is, the estimates should be interpreted as how fleet fuel economy in 2006, or some point in the future, would have changed if we had kept vehicle characteristics the same and continued with the observed changes in both the level sets and technology expenditures.

⁴Section VI relaxes this.

Besides the cost devoted to technologies, other factors also alter the relationship between fuel economy, engine power, and weight. For example, vehicles with manual transmissions are able to achieve higher fuel economy than automatic transmissions, conditional on weight and engine power. Turbochargers also increase fuel efficiency. Insofar as my data allow, I control for a number of these factors, labelled as \mathbf{X}_{it} . I discuss these variables below.

B. Empirical Specification

To estimate the level sets I begin by making functional form assumptions are made regarding $f(\cdot)$, while technological progress is modeled non-parametrically as a set of year fixed effects. I begin the analysis by focusing on two functional forms: Cobb-Douglas and translog. Section VI relaxes both of these assumptions. A mean zero error term, ϵ_{it} , captures additional characteristics of the vehicle that are assumed to be uncorrelated with the other right hand side variables.

Under the Cobb-Douglas and translog assumptions, fuel economy is modeled, respectively, as:⁵

$$(5) \quad \ln mpg_{it}^* = T_t + \beta_1 \ln w_{it} + \beta_2 \ln hp_{it} + \beta_3 \ln tq_{it} + \mathbf{X}_{it}'\mathbf{B} + \epsilon_{it}$$

and,

$$(6) \quad \begin{aligned} \ln mpg_{it}^* = & T_t + \beta_1 \ln w_{it} + \beta_2 \ln hp_{it} + \beta_3 \ln tq_{it} \\ & + \gamma_1 (\ln w_{it})^2 + \gamma_2 (\ln hp_{it})^2 + \gamma_3 (\ln tq_{it})^2 \\ & + \delta_1 \ln w_{it} \ln hp_{it} + \delta_2 \ln w_{it} \ln tq_{it} + \delta_3 \ln hp_{it} \ln tq_{it} + \mathbf{X}_{it}'\mathbf{B} + \epsilon_{it}. \end{aligned}$$

II. Sources of the Shifts

Technological progress represents not only increases in engine technology, but other advances such as advances in transmissions, aerodynamics, rolling resistance, etc. Since the early 1980s, a number of fuel economy/power technologies have become prevalent in vehicles. On the engine side, large efficiency gains from replacing carburetors with fuel injection have been realized. In contrast to an engine in the 1980s, the typical engine today also has the camshaft—the apparatus that lifts the valves as it rotates—above the engine head. This eliminates friction causing pushrods and rocker arms. In addition, the majority of engines today have multiple camshafts, allowing for more than two valves

⁵Fuel economy is often represented as gallons per mile. By taking the log of miles per gallon, the empirical model is equivalent to measuring fuel economy in terms of gallons per mile.

⁶One might be concerned that weight and power are endogenous, in the sense that they are correlated with unobserved vehicle-level productivity. For a discussion, see, for example, G. Steven Olley and Ariel Pakes (1996). Many of the empirical models include fixed manufacturer effects which capture unobserved productivity that is constant across manufacturers, leaving only within-manufacturer differences in productivity across models in the error term. I treat weight and power as exogenous to this component of unobserved productivity, thus following the existing empirical literature that estimates automobile marginal cost as a function of vehicle characteristics (e.g., Berry, Levinsohn and Pakes 1995, Goldberg 1995, Goldberg 1998). I note that the estimated trade-offs and technological progress change little when manufacturer fixed effects are included suggesting that any additional endogeneity concerns are likely to be small.

per cylinder; many also have variable valve timing technologies. More valves allow for the smoother flow of both the fuel/air mixture and exhaust in and out of the cylinder, while variable valve timing allows for the timing of the valve lift to adjust to driving conditions.⁷ Turbochargers or superchargers also increase the efficiency of an engine by using a turbine, spun by either the engine's exhaust (turbocharger) or the rotation of the engine's crankshaft (supercharger), to force air into the engine. This allows for a smaller displacement while holding horsepower constant.⁸ Most recently, cylinder deactivation and hybrid technology are becoming more prevalent. Hybrid technologies use both a gasoline engine and electric motor (with a battery) to propel the vehicle. When there is sufficient stored electricity, the car runs solely on the electric motor or both the engine and electric motor. During times when the vehicle is coasting, the electric motor runs in reverse, thereby recharging the battery. Cylinder deactivation opens the valves on a set of cylinders during times when less power is needed, thus not using these cylinders to power the automobile.

Transmissions have also become more efficient by utilizing more speeds, variable speed transmissions, and torque converter lock-up. Increasing the number of speeds allows the engine to operate at more efficient revolutions per minute (RPMs). Variable speed transmissions have a continuous number of speeds allowing the engine's RPMs to remain relatively constant. Torque converter lock-ups reduce the efficiency losses by fixing the torque converter to the drivetrain at highway speeds. Improvements to other portions of the drivetrain include an increased use of front wheel drive which increases fuel efficiency by having the engine closer to the wheels receiving power and by often having the engine turned 90 degrees so that the rotation of the engine mirrors the rotation of the wheels. Finally, advanced materials, tire improvements, and advances in aerodynamics and lubricants have also lead to efficiency improvements.

The penetration of a number of these technologies since 1975 is plotted in Figures 1 and 2.⁹ Figure 1 focuses on engine-related technologies, while Figure 2 focuses on other parts of the drivetrain. Figure 1 illustrates that compared to the typical vehicle built in 1980, a vehicle today is more likely to be fuel injected, have more than two valves per cylinder, and have variable valve timing.¹⁰ While turbochargers and superchargers have not penetrated the market nearly as much as these other technologies, their use has also increased. Hybrid technologies have also increased in recent years. The diffusion of non-engine drivetrain technologies has also been rapid. Front wheel drive, torque converter lock-ups (for vehicles with an automatic transmission), and transmissions with at least four gears became commonplace in the early 1980s and essentially standard by 1990. By 2006, nearly 70 percent of vehicles had a transmission with at least five speeds; continuous transmissions have also entered the market.

⁷D. M. Chon and J. B. Heywood (2000) find that multiple valves increase fuel efficiency two to five percent above two-valve designs, while variable valve timing increases fuel efficiency by roughly two to three percent.

⁸H. J. Ecker, Dave Gill and Markus Schwaderlapp (2000) find that supercharging diesel engines can yield fuel efficiency improvements as large as 10 percent when combined with variable valve timing.

⁹Data from all variables, other than transmission speeds, are taken from <http://www.epa.gov/otaq/fetrends.htm>. Data for transmission speeds are taken from the model-level data used in this paper.

¹⁰Daniel Snow (2009) finds that the improvements to fuel economy from increased penetration in fuel injection were larger than this graph may suggest for two reasons. First, there was positive selection in the sense that fuel injection was first used in applications that led to the largest efficiency gains. Second, some of the benefits from fuel injection technology spilled over to carburetors making the older technology more efficient.

A number of technologies are also “waiting in the wings”. These include advances in hybrid technology, plug-in hybrids, camless engines, further reductions in engine friction, higher voltage electrical systems, and improved air conditioning.¹¹

III. Data

I use model-level data on nearly all vehicles sold within the United States and subject to CAFE standards. Therefore, the analysis omits vehicles that have a gross vehicle weight in excess of 8500 pounds which are exempt from CAFE regulation. The results should be interpreted in this light, reflecting the progress and trade-offs associated with vehicles with curb weights below 8500 pounds. Fuel economy data come from the National Highway Traffic Safety Administration (NHTSA) and are supplemented with data from Automobile News and manufacturer websites. The data report the weighted average of city and freeway fuel economy, weight, maximum horsepower, and maximum torque.¹² The weight measures for cars and trucks differ. For passenger cars, the data report the curb weight—the weight of the vehicle unloaded. For light duty trucks the weight measure is the vehicle “test weight”, which is more discrete than the curb weight. In addition, data are available on fuel type, aspiration type (e.g., turbocharger), transmission type, and engine size.¹³

Whether to include these additional covariates depends on the question of interest. If one were interested in understanding how much more efficient a normally aspirated, gasoline passenger car with an automatic transmission, conditional on its weight, horsepower, and torque, is today compared to in 1980, we would want to include not only weight, horsepower, and torque, but also all of the additional variables. If instead one were interested in knowing how much more efficient is a vehicle today, compared to in 1980, allowing for changes in engine size, aspiration-rates, fuel types, etc. then the additional variables should be omitted. That is, if a portion of technological advancement is coming from advances in turbo equipment, fuel shifting, or the ability to extract more power from smaller engines, we would not want to include the other covariates, thereby allowing the year effects to absorb these advances. It seems fairly clear that one would not want to condition on engine size; the other variables are not so clear. In what follows, I present results both including all of the variables and results including only transmission and fuel type. They are broadly consistent with each other, but as expected omitting the other variables tends to imply slightly larger technological advances. In addition, Figure 2 suggests that over the sample period the efficiency gap between of manual and automatic transmissions has shrunk. To account for this, I interact the manual transmission

¹¹For a discussion of the cost of these potential technologies and their impacts on fuel economy see, for example, David L. Greene and K.G. Duleep (1993), John DeCicco and Marc Ross (1996), and F. DeCicco, J., F. An and M. Ross (2001).

¹²Fuel economy is measured as a weighted average of city fuel economy (55 percent) and highway fuel economy (45 percent) from the unadjusted measures (i.e., not the fuel economy measures on the labels). Horsepower and torque are closely related. In fact, at a given RPM, $\text{horsepower} = \text{torque} \times \text{RPM} / 5250$. Because the maximum values used in the analysis occur at different RPM levels, there is still information in each. The results are robust to including only one of the two measures.

¹³I take a few steps to uncover errors in the data. Specifically, I exclude all vehicles that have missing observations and observations with torque exceeding 2000 ft. lbs. This omits 5.1 percent of the sample, 97 percent of these are due to missing data. From looking at the data, it appears as though the RPM level at the maximum torque level and torque are reversed for some of these observations. As a frame of reference, the 2006 Dodge Viper has a maximum torque of 712 ft. lbs.; the Lamborghini Diablo has 620 ft. lbs. of torque. I also omit observations with fuel economy below 5 MPG and observation with fuel economy above 70MPG (except for the Honda Insight).

indicatory variable with a time trend.¹⁴

Finally, a number of the empirical models include manufacturer fixed effects. Given the variety of ownership changes over the sample, I take steps to construct a stable definition of manufacturers. For example, I keep Mercedes and Chrysler separate throughout the sample.

IV. Summary Statistics and Graphical Evidence

Before estimating econometric models of the level sets, I provide summary statistics and graphical analyses of both the trade-offs and shifts.

Table 1 reports the summary statistics for vehicles across the entire sample and separately for 1980 and 2006. It is important to note that these statistics represent what cars were available; they differ from the new vehicle fleet summary statistics since the fleet summary statistics are obviously sales weighted. The average fuel economy for passenger cars is just under 28 MPG for the entire sample. The least fuel efficient vehicle has a fuel economy of 8.7 mpg (the 1990 Lamborghini Countach), while the most fuel efficient vehicle is the 2000 Honda Insight at 76.4 MPG.¹⁵ The average fuel economy of automobiles offered was over 27 MPG in 2006, while it was under 23 MPG in 1980. This represents an increase of roughly 18.5 percent.

The average car has a curb weight of over 3000 pounds. Weight has increased by nearly 14 percent over the sample. Remarkably, horsepower has more than doubled over this time, while torque has increased by over 45 percent. All of these gains have occurred with smaller engines. Fewer diesel engines are offered now, compared to in 1980, while the percentage of turbocharged and supercharged vehicles has increased. A similar number of manual transmissions are offered in the two periods. Acceleration has increased by nearly 40 percent over this time period.¹⁶ These changes are similar to changes in the new passenger car fleet from 1980 to 2004 (thus, sales weighted). For the fleet, fuel economy increased by 19.8 percent, weight increased by 13 percent, and horsepower increased by 80 percent. Diesel penetration went from 4.2 percent to 0.3 percent, due in large part to increasing limits on particulate matter emissions. The percentage of cars with either a turbocharger or supercharger increased from 1.0 percent to 5.9 percent, and the percentage of vehicles with manual transmissions went from 30 percent to 20 percent.

Among vehicles that were offered, the increases in fuel economy for light duty trucks was 35 percent. Weight gains have been similar to passenger vehicles. Horsepower increased by 70 percent and torque by 15 percent. Acceleration has not increased as much as with passenger cars, but has still increased by over 25 percent. Fleet data are available for light duty trucks for fuel economy from 1980 to 2004 and for other attributes from 1984 to 2004. For the actual fleet, over these time periods, fuel economy increased by 15.7 percent, weight increased by 26 percent, horsepower increased by 99 percent, diesel penetration went from 2.8 percent to 2.5 percent, the percent of cars with either a turbocharger or

¹⁴A squared term for time was also tried, but was not statistically significant. Time trends interacted with the other indicator variables were also not statistically significant.

¹⁵The results of Section V are robust to excluding the “exotic” manufacturers, such as Lamborghini, Ferrari, etc., as these make up very few observations in the data.

¹⁶Acceleration is imputed using the EPA’s *Light-Duty Automotive Technology and Fuel Trends: 1975 to 2007* estimate for acceleration of $t = F(HP/WT)^{-f}$ with F and f: 0.892 and 0.805 for automatic transmissions and 0.967 and 0.775 for manual transmissions. Because the analysis uses the natural log of each variable, acceleration is implicitly controlled for.

supercharger increased from 0.4 percent to 1.5 percent, and the percentage of manual transmissions went from 41.8 percent to 7.0 percent.

Figures 3 through 6 provide graphical evidence of the trade-offs that exist between fuel economy and other automobile attributes and the technological progress that took place from 1980 to 2006. Figure 3 plots fuel economy against weight separately for 1980 and 2006 for passenger cars. For visual ease, I truncate fuel economy above 50 MPG. A lowess smoothed non-parametric line is also fitted through the data. The figure suggests that a 3000 pound passenger car gets roughly 10 more MPG in 2006, compared to 1980. This increase is roughly constant over the weight distributions. At the mean fuel economy level in 1980, this reflects a 45 percent increase. Similarly, Figure 4 suggests that a passenger car with 150 horsepower gets roughly 12 more MPG in 2006 than in 1980. As with weight the shift in the iso-cost curve is fairly parallel. The graph of fuel economy versus torque mirrors this.

To confirm that similar trade-offs exist for light duty trucks, Figures 5 and 6 repeat the exercise for light duty trucks. Two things are worth noting. First, the magnitude of the shift is similar to passenger cars. Second, the shift is not as constant across the attributes when compared with passenger cars. These figures motivate the econometric models which allows for non-parallel shifts.

V. Econometric Results

Tables 2 and 3 report the level set estimates for passenger cars. Tables 4 and 5 report the results for light trucks.¹⁷ For brevity, I omit the standard errors associated with the year effects, all of which are statistically significant at the 1 percent level.¹⁸ The models vary the amount of control variables and fixed effects. Before discussing the specific results, I describe each model. Models 1 through 3 assume a Cobb-Douglas functional form in weight and engine power characteristics, and vary the set of other covariates. Model 1 includes a full set of technology indicator variables—e.g., manual transmission, manual transmission interacted with a time trend, diesel fuel, turbocharger, and supercharger. Model 2 adds fixed manufacturer effects to Model 1. Model 3 omits the turbocharger and supercharger indicator variables to allow for estimates of technological progress to reflect their increased penetration. Reported standard errors are clustered at the manufacturer level.¹⁹

¹⁷These results do not weight by sales. If technological constraints are the same across firms and vehicle classes (within cars and trucks), there is little reason to weight by sales. However, if the production frontiers differ then estimates weighting vehicles by sales might be preferred. The online appendix reports results where the characteristics data are matched to Ward's Automotive Group data on sales. The Ward's data report sales by model, whereas the characteristics data are more granular. I assume sales are uniformly distributed across the trim levels in the characteristics data. The results are very similar across all specifications.

¹⁸Figures A2 and A4 in the online appendix include 95 percent confidence intervals for Model 6 for passenger cars and light trucks, respectively

¹⁹If manufacturers focus on tuning their engines for different outcomes or vary in terms of other characteristics that may impact fuel efficiency (e.g., aerodynamics), then their errors will be correlated. The manufacturer fixed effects absorb a level shift in this correlation, but manufacturers may vary these choices based on class/year/etc. In this case, clustering at the manufacturer level will account for the variation in the correlation across models and within manufacturer. In practice clustering has a small effect on the standard errors.

A. Trade-Offs

To understand the trade-offs between fuel economy and other vehicle characteristics I focus on Model 3, which includes the Cobb-Douglas terms, fixed manufacturer effects, and indicator variables for whether the vehicle has a manual transmission or uses diesel fuel.²⁰ As the standard errors for Models 4 through 6 indicate, the translog functional form appears to over-parameterize the iso-cost curve, although we can reject the Cobb-Douglas model in favor of the translog model. While the flexibility is useful to understand robustness, it makes elasticity calculations noisy.

The Cobb-Douglas (Model 3) results imply that, *ceteris paribus*, a 10 percent decrease in weight is associated with a 4.19 percent increase in fuel economy. Large fuel efficiency gains are also correlated with lowering horsepower; all else equal, a 10 percent decrease in horsepower is associated with a 2.62 percent increase in fuel economy. The relationship between fuel economy and torque is small and not precisely estimated; a 10 percent increase in torque is correlated with a 0.45 percent increase in fuel economy.

The trade-offs are similar for light duty trucks. The key difference is that torque replaces horsepower as the most significant engine power characteristic.²¹ Increases in weight of 10 percent are associated with a reduction in fuel economy of 3.56 percent, slightly smaller than with passenger cars. On average, fuel economy decreases by 3.03 percent when torque increases by 10 percent. A 10 percent increase in horsepower decreases fuel economy by 0.71 percent, but this effect is only marginally statistically significant.

Finally, the coefficients associated with manual transmissions and diesel engines suggest fuel economy savings for these two attributes. The increase in fuel efficiency from manual transmissions is estimated to fall over time, consistent with Figure 2; late in the sample the relative efficiencies are not statistically distinguishable. The gains from a manual transmission early in the sample are between 8 and 10 percent for passenger cars and between 9 and 10 percent for light duty trucks. These efficiency gains of automatic transmissions, relative to manual transmissions, also represent technological improvements specific to automatic transmission. Below, I focus on the more general technological improvements that have occurred over the sample, but one could view these understating technological progress by roughly 6 to 8 percent from 1980 to 2006 since 80 percent of vehicles sales have automatic transmissions.

The increase in fuel efficiency from diesel technology is between 19 and 27 percent and 24 and 28 percent for passenger cars and light duty trucks, respectively. These gains reflect both the increase in the thermal efficiency of diesel engines—the ability to convert the BTUs in the fuel to useful energy, rather than heat—and the fact that diesel fuel has a greater energy content.²² The key difference in the two technologies is that diesel engines replace a spark plug with much higher compression ratios—the ratio of the cylinder volume when the piston is at its lowest point to when it is at its highest

²⁰As Tables 2 and ?? indicate Model 3 explains a large portion of the variation in log fuel economy. If we decompose this into within-year fit, the average within-year R-squared for passenger cars is 0.90, and for light trucks it is 0.80.

²¹This is consistent with the fact that torque, which peaks at a lower RPM than horsepower, is most important for towing while horsepower is most important for acceleration. Therefore, manufacturers are more likely trading off fuel economy for torque when tuning engines for truck applications.

²²The higher energy content also translates to a proportional increase in greenhouse gas emissions. The EPA reports that a gallon of gasoline has 124,000 BTUs, while a gallon of diesel has 139,000 BTUs (<http://www.eia.doe.gov/kids/energyfacts/>).

point.²³ With higher compression ratios, the heat from the compressed air combined with the more combustible diesel fuel is sufficient to ignite the air/fuel mixture. The higher compression rates lead to efficiency gains.

While estimates of the theoretical gains in thermal efficiency vary, as do the engineering estimates of the gains in practice, Isuzu estimates that the thermal efficiency of gasoline vehicles is between 25 and 30 percent, while the thermal efficiency of diesel engines is between 35 and 42 percent.²⁴ These estimates suggest a minimum efficiency gain of 17 percent and a maximum gain of 68 percent. At their average levels, the efficiency gain is 40 percent. Accounting for the higher energy content would imply efficiency gains near the low end of this range. The larger increases in fuel efficiency for light duty trucks are consistent with anecdotal evidence that the gains from diesel technology are greatest for larger, more powerful, engines.²⁵

B. Technological Progress

The technological progress estimates are very similar across models. For passenger cars, the Cobb-Douglas models yield slightly higher estimates of progress and the models are robust to including manufacturer fixed effects or the turbocharger and supercharger indicator variables. Tables 3 and 5 report the coefficients for passenger cars and light duty trucks, respectively. All of the models imply that, conditional on weight and power characteristics, the log of fuel economy is over 0.485 greater in 2006, compared to 1980. At the mean fuel economy in 1980, this translates to a 58 percent increase.²⁶ The rate of progress was greatest early in the sample—a time when gasoline prices were high and CAFE standards were rapidly increasing (see Figure 7).

The results are also robust across models when considering light duty trucks; by the end of the sample, the estimates across passenger cars and light duty trucks are similar.²⁷ All of the models imply that, conditional on weight and power characteristics, the log of fuel economy is over 0.465 greater in 2006, compared to 1980. At the mean fuel economy in 1980, this translates to a 59 percent increase. As with passenger cars, the rate of progress was greatest early in the sample; however unlike passenger cars, technological progress was relatively flat during the late 1990s, leading to a flatter curve during the 1990s and a more rapid rate of progress later in the sample.²⁸

²³Another difference is that the fuel is injected later in a diesel engine, while in a gasoline engine the air/fuel mixture is sucked in as the piston drops after the previous cycle.

²⁴See, www.isuzu.co.jp/world/technology/clean/.

²⁵This is a likely reason diesel engines become more prevalent the larger the vehicle (e.g., heavy-duty diesel trucks, trains, ships, etc.).

²⁶Figure A1 in the online appendix plots the estimated technological progress for passenger cars across all models. The results are also tightly estimated. Figure A2 in the online appendix plots the estimates and 95 percent confidence interval for Model 6; the other models yield similar confidence intervals.

²⁷Figure A3 in the online appendix plots the estimated technological progress for light trucks.

²⁸These estimates are somewhat larger compared to two related papers in the engineering literature. Nicholas Lutsey and D. Sperling (2005) use yearly fleet average observations to decompose annual fuel economy changes from 1975 to 2004 by regressing fleet average fuel economy on estimates of engine and drivetrain efficiency, aerodynamic drag and rolling resistance, fleet average weight and fleet average acceleration. Using their estimates they calculate that fuel economy would have been 12 percent higher from 1987 to 2004 if weight, size, and acceleration were held constant; my results imply a gain of roughly 22 percent. Given that they use proxies for engine efficiency, drag and rolling resistance, the coefficients from the their regression may be biased downward because of attenuation. This would in turn lead to smaller estimated potential efficiency gains. Chon and Heywood (2000) analyze only engine technological progress and find that from 1984 to 1999 “brake mean effective pressure”—the average pressure applied to the piston during an engine’s power stroke—grew at an average rate of 1.5 percent per year. Because

The correlation between technical progress and high gasoline prices coupled with the adoption of CAFE standards is consistent with a small literature that finds regulatory standards and energy prices affects innovation. Newell, Jaffe and Stavins (1999) find a similar result using product level data for room and central air conditioners. Specifically, they find that electricity prices affect technological progress for both room and central air conditioners, and room air conditioner efficiency standards also increase technological progress. In contrast, they do not find an effect of natural gas prices on natural gas water heater efficiency. Popp (2002) finds similar results using patent counts related to energy efficiency and energy prices. Using patent counts from 11 classifications related to either energy supply or energy demand from 1970 to 1994, he finds a positive relationship between patent counts and energy prices (measured as dollars per BTU, across all sectors). The raw correlations are similar for automobiles. For passenger cars, the correlation between annual technological rates of progress and percentage changes in CAFE standards and the log of gas prices is 0.64 and 0.71, respectively. Regressing technological progress on both changes in CAFE standards and the log of gas prices yields positive and statistically significant coefficients for each variable. Interestingly, the correlation for light duty truck technological progress is stronger with the change in passenger car CAFE standards (0.27 vs. 0.05) and is not as strong with gas prices as with passenger cars (0.36). Table 6 reports the results from a simple regression of the annual rates of technological progress on the log of real gas prices and the percentage change in the CAFE standard. While it is easy to push these results too far, they are consistent with Newell, Jaffe and Stavins (1999) and Popp (2002), with the correlation with gas prices being the most robust relationship.²⁹

C. CAFE Standard Compliance Strategies

The Bush Administration recently adopted new CAFE standards that called for fleet fuel economy to increase to 35 MPG by 2020. The Obama Administration has more recently announced tougher CAFE standards that call for a 35.5 MPG average by 2016. I use the estimates to forecast fleet fuel economy in 2020 and 2016 accounting for: (a) different rates of technological progress, (b) the trade-offs between fuel economy, weight, and power, and (c) changes in the passenger car/light duty truck mix to change.³⁰ To be clear, these do not represent counterfactual equilibria, as equilibrium counterfactuals would come from the interaction of the shape of the cost function, technological progress, and demand. Instead, these results show the set of outcomes that are technologically

the year fixed effects capture improvements throughout the vehicle, it is not surprising that the progress in one component of this, the engine, is smaller than the aggregate.

²⁹While changes in CAFE standards are predictable, a large component of the changes in gas prices are not. The results are similar if I use lagged gas prices instead of the current gas price.

³⁰I abstract away from two changes to how the new CAFE standards will be implemented. The new standards will be “footprint” based. That is, it creates car specific standards based on footprints and the compliance will be such that a firm’s weighted sum of the difference between the car-specific standard and the actual level must be positive. While many details are yet to be determined, presumably the shape of the footprint function will be adjusted such that fleet fuel economy will reach the reported levels of 35 and 35.5 MPG, respectively. A second change that makes the compliance strategies more relevant is that trading will be allowed. Therefore, the constraint will act as an industry-wide constraint and the fuel economy across all manufacturers is the relevant number of interest. In addition, the Obama standards will be implemented through the Clean Air Act and will account for greenhouse gas emissions that are also emitted through such sources as the vehicle’s air conditioning system. In talking with industry sources, air conditioner improvements may lead to greenhouse gas emission reductions of roughly 3 percent.

feasible under certain rates of technological progress. Furthermore, without the demand system and data on externalities, I am not able to make statements about the relative welfare implications of either the Bush or Obama standards.

I assume three levels of technological progress: none, a rate of progress equal to the average annual rate estimated, and a rate equal to the 75th percentile. I use data on changes in *fleet* characteristics to construct sensible movements along the fuel economy and weight/power level curve. Data on weight and horsepower are available from 1980 to 2004 for passenger cars and from 1984 to 2004 for light duty trucks. Using these data I measure the average yearly increase for these variables and extrapolate to 1980 to 2006. Because horsepower and torque are so correlated, I use the ratio of the increase in torque and the increase in horsepower in my data and assume the same ratio exists for the sales-weighted increase in torque.³¹

Using the assumptions regarding the increases in weight and power from 1980 to 2006, I can vary how close fleet characteristics are to their 1980 levels. To construct reasonable changes in the car/truck mix, I report results from the mix in 2006, 43.4 percent cars, and incrementally increase this to 80 percent passenger cars—the level in 1980.

Table 7 summarizes new vehicle fleet fuel economy in 2020 across changes in these three dimensions; the table reports results using the trade-off estimates from Model 3. Shading reflects meeting the 2020 standards. The first set of rows assumes zero technological progress over the 14 years from 2006 to 2020. The different columns allow engine power and weight to continue to grow at their average rates (third column), stay at their current levels (fourth column), and move progressively closer to their 1980 levels (columns five through seven). The zero growth, zero reduction, and zero mix shift reports the average new fleet fuel economy in 2006 across passenger cars and light duty trucks—25.8 MPG. The first row implies that if we were to continue with the same car/truck mix, we could increase fuel economy to over 33 MPG by reducing size and power to their 1980 levels. Shifting to just over 60 percent passenger cars, from the 43.4 mix in 2006, while also reverting to 1980 power and weight achieves the new CAFE standards. In contrast, if we continued with the same car/truck mix and the same rate of growth in engine power and weight, fuel economy would fall to 17.8 MPG in 2020.

Once we account for technological progress, the 2020 standards are met even if current levels of weight and engine power are left relatively unchanged. I present two sets of results. The first assumes that the average rate of technological progress for cars and trucks holds from 2006 to 2020 (1.87 and 1.79 percent for cars and trucks, respectively). The second assumes that firms progress at a rate equal to the 75th percentile (2.48 percent and 3.08 percent, respectively). Using the average rate of progress and keeping vehicle size and power attributes constant, we meet the standard by shifting to roughly 60 percent cars. Alternatively, moving 25 percent towards the size and power of 1980 vehicles exceeds the standard. If we progress at a rate equal to the 75th percentile over 1980 to 2006, we exceed the standard by 3 MPGs without shifting of size/power attributes or

³¹For example, for passenger cars the implied increase for horsepower from 1980 to 2006 is 89 percent. Among cars that are offered, it is 123 percent, while the increase in torque is 46 percent. To construct the assumed increase in sales-weighted torque, I use $(46/123) \times 89$ percent. The resulting assumptions for passenger cars are an increase in weight of 14.1 percent from 1980 to 2006, 89.3 percent for horsepower and 33.5 percent for torque. For light trucks, the assumed increases are 35.4 percent, 144.9 percent and 31.8 percent for weight, horsepower and torque, respectively. I also analyze how fuel efficiency would evolve if engine power and weight continued to grow at their average rates over this time period.

the car/truck mix. Rapid technological progress combined with shifts back to 80 percent cars and “downsizing” results in an average fuel economy of over 52.4 MPG.

Table 8 reports new vehicle fleet fuel economy in 2016, the year the Obama standards are fully phased in. The panel with zero technological progress does not change save the “continued growth” column. Unlike the weaker Bush standards, the Obama standards will require moderate “downsizing” of vehicle characteristics—either shifts to more passenger cars or reducing weight and engine power characteristics to near their 1980 levels—even when technological progress is considered. With average technological progress for cars and trucks and no shifting of the car/truck mix, we can only meet the standards by shifting weight and engine power levels to 50 percent of their 1980 levels; changing only the car/truck mix does not achieve the standard. More rapid technological progress makes the standards easier to achieve, but still requires changes in fleet characteristics, either through the car/truck mix or weight and engine size.

There are a number of reasons to prefer the more rapid rates of technological progress. Recall progress was most rapid during the run up of CAFE standards in the early 1980s, a time when real gas prices were roughly equal to those of today. For passenger cars, CAFE standards tightened from their inception in 1978 to 1985; they went from 18 to 27.5 MPG. During this period of increasing CAFE standards, the average estimated progress for passenger cars was 3.5 percent. This is well above the 75th percentile. For light truck CAFE standards, the initial increase in the standard stopped in 1987. During this time, the estimated rate of progress is 2.2 percent per year, roughly equal to the 75th percentile.³²

VI. Alternative Estimators

The previous empirical models implicitly assume that the “trade-off” coefficients remain constant over time. One concern is that this masks technological progress that alter these trade-offs. Because the above trade-off coefficients will represent the average trade-offs across all years in the data (appropriately weighted), if the trade-offs in later years are not as large, technological progress may be biased downwards.³³ I relax this assumption in two ways and discuss the results at the end of the section.

A. Oaxaca/Blinder-Type Decomposition

Alan S. Blinder (1973) and Ronald Oaxaca (1973) note that the estimate of the effect of a dummy variable—race in their case and model year in my case—in a regression where the remaining coefficients are assumed to be constant also captures changes in the coefficients associated with the other right hand side variables if the means of these variables differ across the two samples. They also note that the estimated effect from turning on or off the indicator variable depends on which set of coefficients you “hold constant”. In many cases, there is no obvious group of coefficients to hold fixed; in my case because we are interested in asking what the fuel economy of current vehicles would

³²Using these rates of progress leads to one additional compliance strategies for the newest CAFE standards compared to using the 75th percentile.

³³If the mean weight, horsepower, etc. are the same in both time periods, then the year effects will correctly represent the average increase in fuel economy. However, if the trade-offs become less severe and the average of these characteristics in the later years is larger than in the earlier years, then the year effects will underestimate the true increase. As discussed above, the characteristics have indeed increased over time.

be if they were produced using the technology available in 1980, a natural choice is to use the coefficients from the beginning of the sample. For example, imagine estimating the relationship between fuel economy and weight and engine power in 1980 and using these parameters to fit the fuel economy of 2006 vehicles. The difference in actual and fitted fuel economy reflects both shifts in the level sets, as well as changes in the slope of the level sets.

To implement this, I estimate Models 3 and 6 using data from only the first three years of the sample.³⁴ Using these coefficients, I fit fuel economy for the remaining observations and calculate the difference between actual fuel economy and the fitted value.³⁵ The difference measures technological progress using the estimated trade-offs in the first three years of the sample, therefore it captures changes in these trade-offs.

B. Matching Estimator

As a second robustness check, I estimate a propensity score matching model. Matching models are often used to estimate a treatment effect when there is selection on observables. By comparing an observation in the “treatment group” with one in the “control group” which has a very similar *ex ante* probability of being in the treatment group, as measured by the propensity score, the estimate will be consistent in the presence of selection on observables.

To reframe technological progress within standard uses of matching estimators, we are interested in how the fuel economy of a vehicle built in 2006 would change if the observed characteristics of the vehicle did not change but the vehicle used the technology available in 1980. We can define the “treatment”, $W_i = 1$, as using 2006’s technology; $W_i = 0$ implies using 1980’s technology. If we define the log of fuel economy for vehicle i as y_i , we want to estimate:

$$(7) \quad \Delta y_i = y_i(W_i = 1) - y_i(W_i = 0).$$

We can then summarize the sample *average treatment effect* as:

$$(8) \quad \overline{\Delta y_i} = SATE = \frac{1}{N} \sum y_i(W_i = 1) - y_i(W_i = 0).$$

More important is the *average treatment effect for the treated* which measures how much more fuel efficient the average vehicle in 2006 is if these same vehicles were produced using technology from 1980:

$$(9) \quad \overline{\Delta y_i | W_i = 1} = SATT = \frac{1}{N_1} \sum_{i|W_i=1} y_i(W_i = 1) - y_i(W_i = 0),$$

where N_1 is the 2006 sample.

³⁴There is a power/bias trade-off. Using only the first year will minimize any bias, but yields noisier coefficients on some of the translog coefficients. While the results are robust to using only the first year, I include the first three years for more precision. The estimated technological progress for 1981 and 1982 therefore becomes the year effects associated with these years. The results are robust to moving this cut-off around.

³⁵If we were interested in the heterogeneity of this estimate across all vehicles in a given year, X , a better measure may be the fitted values of these vehicles from a regression using the data from X . Since I only report the mean across all vehicles doing this would yield the same measure.

Of course, we cannot view the actual counterfactual as we never see a 2006 Honda Accord being made with 1980 technology. The matching estimate uses “similar” vehicles in 1980 to compare to the 2006 vehicle as a way to impute the fuel economy of the 2006 Honda Accord using 1980 technology. If we had only fuel economy and, say, weight, this would be a simple estimator. We would choose the m closest cars, in terms of weight, to the 2006 Honda Accord and calculate the average difference in fuel economy across the 2006 Honda Accord and the “control group”. Multiple attributes requires reducing these to a single index using some norm; the propensity score does this.

Given a set of vehicles made in two years, say 1980 and 2006, the propensity score is defined as the probability a given vehicle is produced in 2006, conditional on a set of attributes, $Pr(W_i = 1|X_i)$. I estimate the propensity score by estimating a probit model where the dependent variable is one if the vehicles is built in 2006 and zero if built in 1980. Using this, for a given vehicle in 2006 the “control group” is the average fuel economy of the closest four vehicles as measured by the fitted probability from the probit, i.e., the four closest matches to the 2006 vehicle. I repeat this process for model years 1981 to 2005.

To estimate the propensity score Keisuke Hirano, Guido Imbens and Gerret Ridder (2003) suggest being as flexible as possible; I include the set of translog variables from Model 6 as conditioning variables and use the nearest four vehicles as matches. Alberto Abadie and Guido Imbens (2002) show that unless matches are perfect, the estimates will be biased. I adopt their bias-correction procedure that uses the relationship between the estimated treatment effect and the propensity score to adjust comparisons that do not match perfectly. I use the Cobb-Douglas set of co-variates for the bias correction.³⁶ The reported standard errors account for heteroskedasticity.

C. Results from Alternative Estimators

Table 9 reports the technological progress estimates from these two alternative estimators for passenger cars and light trucks, respectively. Both the Oaxaca/Blinder-type (OB) and matching model estimates largely agree with the more parametric models. Three of the four models yield larger estimates of technological progress than the previous models. For passenger cars, the OB estimates imply technological advances of between a 0.427 and 0.618 change in the log of fuel economy by 2006; these estimates bookend the previous results. For light duty trucks, both OB estimates are larger than the previous models. The matching models tend to yield noisier estimates, but are still consistent with the previous models. Progress is estimated to be a 0.477 change in the log of fuel economy by 2006 for passenger cars and a 0.682 change in the log of fuel economy for light duty trucks.

Combined these results suggest that the parametric models yield conservative estimates for the technological progress.

VII. Robustness to Vehicle-Specific Technology Expenditures

I estimate three additional models that shed light on whether the previous technological progress and trade-off estimates are biased due to movements in vehicle-specific

³⁶Abadie and Imbens (2002) also use a smaller set of covariates for the bias correction term. I have found that using the translog set yields unrealistically large estimates of progress.

technology expenditures either within a year or over time. The first model includes vehicle-specific relative prices *within a given year* on the right hand side. Tables 10 and 11 report the trade-off and technological progress estimates for passenger cars, respectively, while Tables 12 and 13 report the trade-off and technological progress estimates for light duty trucks, respectively.

If expenditures on technology are correlated with the other right hand side variables, we would expect the trade-off estimates to change once price was included on the right hand side, since vehicles prices are likely positively correlated with technology adoption.³⁷ This is not the case. For the Cobb-Douglas specification, the trade-off estimates are extremely similar across both passenger cars and light duty trucks. For passenger cars, the largest change is less than 0.016 (the coefficient associated with horsepower), while the largest change for trucks is 0.03 (the coefficient associated with horsepower). The translog specification is more difficult to interpret since the right hand side variables are so correlated, so I focus on the estimates of technological progress.

The estimates of technological progress also change little when we account for relative prices. For the Cobb-Douglas model, the estimated technological gains by 2006 are a 0.483 change in the log of fuel economy, compared to a 0.511 change in the log of fuel economy when the relative price is omitted for passenger cars, and a 0.489 change in the log of fuel economy compared to a 0.497 change in the log of fuel economy when price is omitted for light duty trucks. For the translog model, once relative prices are included, the gains by 2006 change from a 0.486 change in the log of fuel economy to a 0.438 change in the log of fuel economy for passenger cars and from a 0.466 change in the log of fuel economy to a 0.450 change in the log of fuel economy for light trucks.

In both the Cobb-Douglas and translog models, relative prices are negatively correlated with fuel economy and the effect is small. The Cobb-Douglas model suggests that a doubling of price is correlated with a 3.1 percent reduction in fuel economy for passenger cars and a 2.9 percent reduction for light trucks; this effect is significant at the 5 percent level for cars, but is statistically insignificant for trucks. The translog model suggests that a doubling of price is correlated with a 5.2 percent reduction in fuel economy for passenger cars and a 3.9 percent reduction for light trucks; this effect is significant at the 1 percent level for cars, but only marginally statistically significant for trucks.

The second model includes the log of the real price on the right hand side. If shifts in the level sets capture increases in how much manufacturers are spending on technology over time, we would expect that including the real price would reduce the technological progress estimates. Given the inclusion of fixed year effects, the within year trade-off estimates are identical to those when we include relative prices, so I only discuss the technological progress estimates. For the Cobb-Douglas model, the estimated technological gain by 2006 is a 0.500 change in the log of fuel economy, compared to a 0.511 change in the log of fuel economy when the real price is omitted for passenger cars. For light trucks it is a 0.505 change in the log of fuel economy compared to a 0.497 change in the log of fuel economy when price is omitted. For the translog model, the coefficient for passenger cars changes from a 0.486 change in the log of fuel economy (base model) to a 0.467 change in the log of fuel economy and increases from a 0.466 change in the log of fuel economy to a 0.472 change in the log of fuel economy for light trucks.

³⁷I use the model's MSRP. For 381 of the 27,185 observations price is not available.

The final model is similar in nature and compares the relative fuel economy of base and “luxury” brands offered by the same manufacturer. That is, I compare the relative efficiency of Acura v. Honda, Ford v. Lincoln, GM v. Cadillac, Infiniti v. Nissan, and Toyota v. Lexus. For passenger cars, the luxury brand is correlated with lower fuel economy and once again the coefficient is small. For light trucks the coefficient is also small and is not statistically significant. Interestingly, despite the fact that this model uses only five manufacturers, the estimated trade-offs change very little. Again focusing on the Cobb-Douglas results, the largest change for passenger cars is less than 0.018 (torque). The coefficients change slightly more for light trucks, but the changes remain below 0.08. The estimated efficiency gains are also similar. For passenger cars, the degree of technological progress by 2006 changes from a 0.511 change in the log of fuel economy to a 0.460 change in the log of fuel economy and from a 0.486 change in the log of fuel economy to a 0.461 change in the log of fuel economy for the Cobb-Douglas and translog models, respectively. For light trucks, the estimates change from a 0.497 change in the log of fuel economy to a 0.486 change in the log of fuel economy and from a 0.466 change in the log of fuel economy to a 0.451 change in the log of fuel economy for the Cobb-Douglas and translog models, respectively.

All three of these extensions to the base models suggest that prices have a small negative correlation with fuel economy and that the estimated technological progress is largely unaffected. This supports the view that the shifts in the level sets represent technological progress and not movements up the marginal cost function. The small and often statistically insignificant association between price and fuel economy, conditional on weight and engine power, and the small change in the trade-off estimates also suggests that the bias in the trade-off estimates is likely to be small.

VIII. Conclusions

This paper estimates the trade-offs that consumers and manufacturers face when choosing between fuel economy, vehicle size and vehicle power, as well as the technological advances that have occurred over these dimensions from 1980 to 2006. The results imply that had we kept vehicle size and power at their 1980 levels, fuel economy would have been nearly 60 percent higher in 2006.

The results also generate a variety of potential compliance strategies for the new CAFE standards adopted by both the Bush and Obama Administrations. The findings suggest that the Bush CAFE standards would have done little to push manufacturers and consumers to smaller, less powerful cars, or away from SUVs and back into passenger cars. In contrast, the Obama standards will require shifts to smaller, less powerful cars and fewer SUVs.

REFERENCES

- Abadie, Alberto, and Guido Imbens.** 2002. "Simple and Bias-Corrected Matching Estimators." National Bureau of Economic Research Working Paper 0283.
- Berry, Steven, James Levinsohn, and Ariel Pakes.** 1995. "Automobile Prices in Market Equilibrium." *Econometrica*, 63(4): 841–890.
- Blinder, Alan S.** 1973. "Wage Discrimination: Reduced Form and Structural Variables." *Journal of Human Resources*, 8: 436–455.
- Busse, Meghan, Christopher R. Knittel, and Florian Zettelmeyer.** 2009. "Pain at the Pump: The Differential Effect of Gasoline Prices on New and Used Automobile Markets." National Bureau of Economic Research Working Paper 15590.
- Chon, D. M., and J. B. Heywood.** 2000. "Performance Scaling of Spark-Ignition Engines: Correlation and Historical Analysis of Production Engine Data." SAE paper number 2000-01-0565.
- DeCicco, J., F., F An, and M. Ross.** 2001. *Technical Options for Improving Fuel Economy of US Cars and Light Trucks, by 2010-2015*. Washington, D.C.: American Council for an Energy-Efficient Economy.
- DeCicco, John, and Marc Ross.** 1996. "Recent Advances in Automotive Technology and the Cost-Effectiveness of Fuel Economy Improvement." *Transportation Research D*, 1(2): 79–96.
- Ecker, H. J., Dave Gill, and Markus Schwaderlapp.** 2000. "Downsizing of Diesel Engines: 3-Cylinder/4-Cylinder." SAE paper number 2000-01-0990.
- Goldberg, Pinelopi K.** 1995. "Product Differentiation and Oligopoly in International Markets: The Case of the U.S. Automobile Industry." *Econometrica*, 63(4): 891–951.
- Goldberg, Pinelopi Koujianou.** 1998. "The Effects of the Corporate Average Fuel Efficiency Standards in the US." *The Journal of Industrial Economics*, 46(1): 1–33.
- Greene, David L., and K.G. Duleep.** 1993. "Costs and Benefits of Automotive Fuel Economy Improvement: A Partial Equilibrium Analysis." *Transportation Research*, 27(A): 217–235.
- Hirano, Keisuke, Guido Imbens, and Gerret Ridder.** 2003. "Efficient Estimation of Average Treatment Effects using the Estimated Propensity Score." *Econometrica*, 71: 1161–1189.
- Klier, Thomas, and Joshua Linn.** 2008. "The Price of Gasoline and the Demand for Fuel Efficiency: Evidence from Monthly New Vehicles Sales Data." Federal Reserve Bank of Chicago Working Paper Series number WP-09-15.
- Lutsey, Nicholas, and D. Sperling.** 2005. "Energy Efficiency, Fuel Economy, and Policy Implications." *Transportation Research Record*, 1941: 8–17.
- Newell, Richard G., Adam B. Jaffe, and Robert N. Stavins.** 1999. "The Induced Innovation Hypothesis and Energy-Saving Technological Change." *Quarterly Journal of Economics*, 114(3): 941–975.
- Oaxaca, Ronald.** 1973. "Male-Female Wage Differentials in Urban Labor Markets." *International Economic Review*, 14(3): 693–709.
- Olley, G. Steven, and Ariel Pakes.** 1996. "The Dynamics of Productivity in the Telecommunications Equipment Industry." *Econometrica*, 64(6): 1263–1297.

- Popp, David.** 2002. "Induced Innovation and Energy Prices." *American Economic Review*, 92(1): 160–180.
- Sawhill, James W.** 2008. "Are Capital and Operating Costs Weighted Equally in Durable Goods Purchases? Evidence from the US Automobile Market." Working Paper.
- Snow, Daniel.** 2009. "Extraordinary Efficiency Growth in Response to New Technology Entries: The Carburetors Last Gasp." Working Paper.

Tables and Figures

Passenger Cars						
Variable	Mean	Std. Dev.	Min	Max	Mean in 1980	Mean in 2006
Fuel Economy	27.90	6.43	8.70	76.40	22.89	27.11
Curb Weight	3019.45	593.70	1450.00	6200.00	3041.64	3455.04
HP	157.14	76.97	48.00	660.00	110.63	247.02
Torque	238.71	105.16	69.40	1001.00	226.29	329.67
Acceleration	10.56	2.52	3.03	20.75	13.14	8.08
Liters	2.77	1.15	1.00	8.30	3.41	3.22
Diesel	0.03	0.18	0	1	0.07	0.01
Manual	0.38	0.49	0	1	0.35	0.35
Supercharged	0.01	0.11	0	1	0.00	0.05
Turbocharged	0.11	0.31	0	1	0.03	0.15
Sample Size	14337				507	572

Light Trucks						
Fuel Economy	20.76	4.65	9.90	45.10	16.81	22.80
Curb Weight	3898.45	778.25	1920.00	6700.00	3877.33	4427.68
HP	160.37	53.76	48.00	500.00	138.59	236.52
Torque	296.01	90.95	76.60	750.00	304.48	351.21
Acceleration	12.13	2.34	4.89	28.19	13.16	9.65
Liters	4.06	1.33	1.20	8.30	4.72	3.95
Diesel	0.05	0.21	0	1	0.02	0.00
Manual	0.33	0.47	0	1	0.42	0.17
Supercharged	0.00	0.05	0	1	0.00	0.01
Turbocharged	0.01	0.11	0	1	0.00	0.03
Sample Size	12805				669	470

TABLE 1—SUMMARY STATISTICS

	Model 1	Model 2	Model 3	Model 4	Model 5	Model 6
ln(Weight)	-0.398** (0.046)	-0.383** (0.032)	-0.419** (0.029)	0.462 (1.271)	0.197 (1.261)	-0.043 (1.254)
ln(HP)	-0.324** (0.047)	-0.268** (0.039)	-0.262** (0.043)	-2.549** (0.803)	-3.092** (0.693)	-2.937** (0.774)
ln(Torque)	-0.019 (0.038)	-0.064* (0.030)	-0.045 (0.035)	-0.041 (0.757)	0.212 (0.583)	0.191 (0.673)
ln(Weight) ²				-0.208+ (0.117)	-0.165 (0.115)	-0.154 (0.118)
ln(HP) ²				-0.180+ (0.106)	-0.099+ (0.054)	-0.151* (0.060)
ln(Torque) ²				-0.030 (0.123)	0.025 (0.065)	-0.022 (0.066)
ln(Weight)*ln(HP)				0.473** (0.139)	0.489** (0.129)	0.477** (0.147)
ln(Weight)*ln(Torque)				0.016 (0.108)	-0.059 (0.122)	-0.044 (0.137)
ln(HP)*ln(Torque)				0.047 (0.197)	-0.017 (0.059)	0.070 (0.057)
Manual	0.087** (0.013)	0.101** (0.013)	0.102** (0.013)	0.076** (0.013)	0.086** (0.012)	0.087** (0.012)
Manual*trend	-0.004** (0.001)	-0.004** (0.001)	-0.004** (0.001)	-0.003** (0.001)	-0.003** (0.001)	-0.003** (0.001)
Diesel	0.196** (0.018)	0.212** (0.017)	0.229** (0.023)	0.257** (0.019)	0.248** (0.025)	0.272** (0.033)
Turbocharged	0.025* (0.010)	0.051** (0.010)		0.017* (0.007)	0.051** (0.009)	
Supercharged	0.055** (0.017)	0.034** (0.011)		0.057** (0.020)	0.038* (0.016)	
Year Fixed Effects?	Yes	Yes	Yes	Yes	Yes	Yes
Manufacturer Fixed Effects?	No	Yes	Yes	No	Yes	Yes
Observations	14423	14423	14423	14423	14423	14423
R-squared	0.838	0.883	0.879	0.847	0.890	0.886

Notes: ** denotes significance at the one percent level, * at the five percent level, and + at the 10 percent level.
Standard errors are clustered at the manufacturer level.

TABLE 2—TRADE-OFF ESTIMATES FOR PASSENGER CARS

Year	Model 1	Model 2	Model 3	Model 4	Model 5	Model 6
1981	5.5%	5.5%	5.5%	5.4%	5.3%	5.3%
1982	9.5%	9.5%	9.6%	9.2%	9.0%	9.1%
1983	13.4%	13.1%	13.2%	12.8%	12.5%	12.5%
1984	16.0%	15.6%	15.9%	15.0%	14.8%	15.0%
1985	18.8%	18.1%	18.5%	17.4%	17.1%	17.4%
1986	21.5%	21.1%	21.5%	20.0%	19.9%	20.1%
1987	22.5%	22.0%	22.4%	20.7%	20.9%	21.1%
1988	25.1%	24.2%	24.5%	23.3%	23.1%	23.2%
1989	26.0%	25.2%	25.5%	23.9%	23.9%	23.9%
1990	27.8%	26.7%	27.0%	25.7%	25.4%	25.4%
1991	29.1%	27.9%	28.1%	26.8%	26.5%	26.4%
1992	30.4%	29.3%	29.4%	28.0%	27.8%	27.6%
1993	33.5%	32.2%	32.2%	31.1%	30.4%	30.2%
1994	35.5%	34.0%	33.9%	33.0%	32.3%	32.0%
1995	38.6%	37.1%	37.0%	35.8%	35.1%	34.8%
1996	39.8%	38.0%	37.8%	36.8%	36.1%	35.6%
1997	40.7%	39.3%	39.2%	37.9%	37.3%	37.0%
1998	42.0%	40.9%	40.9%	39.2%	38.9%	38.7%
1999	41.7%	41.1%	41.0%	38.8%	39.2%	38.9%
2000	42.6%	42.3%	42.1%	39.6%	40.5%	40.1%
2001	43.8%	43.4%	43.4%	40.9%	41.5%	41.3%
2002	45.4%	45.1%	45.0%	42.4%	43.1%	42.9%
2003	47.4%	46.7%	46.7%	44.5%	44.7%	44.6%
2004	48.3%	47.4%	47.5%	45.5%	45.3%	45.2%
2005	49.5%	48.8%	48.9%	46.9%	46.7%	46.7%
2006	52.2%	51.2%	51.1%	49.4%	48.6%	48.5%

TABLE 3—TECHNOLOGICAL PROGRESS ESTIMATES FOR PASSENGER CARS

	Model 1	Model 2	Model 3	Model 4	Model 5	Model 6
ln(Weight)	-0.363** (0.052)	-0.355** (0.040)	-0.356** (0.043)	0.280 (1.534)	1.431 (1.172)	1.391 (1.222)
ln(HP)	-0.047 (0.043)	-0.071+ (0.041)	-0.071+ (0.041)	-0.847 (0.704)	-1.308* (0.561)	-1.283* (0.595)
ln(Torque)	-0.277** (0.048)	-0.303** (0.054)	-0.303** (0.052)	-0.908 (1.037)	-0.780 (0.839)	-0.791 (0.838)
ln(Weight) ²				-0.197* (0.094)	-0.245** (0.063)	-0.242** (0.067)
ln(HP) ²				0.011 (0.156)	0.055 (0.146)	0.052 (0.145)
ln(Torque) ²				-0.405** (0.111)	-0.388** (0.130)	-0.384** (0.129)
ln(Weight)*ln(HP)				-0.050 (0.111)	-0.064 (0.092)	-0.063 (0.093)
ln(Weight)*ln(Torque)				0.505** (0.148)	0.454** (0.116)	0.450** (0.115)
ln(HP)*ln(Torque)				0.199 (0.283)	0.218 (0.269)	0.217 (0.267)
Manual	0.103** (0.021)	0.094** (0.016)	0.094** (0.016)	0.099** (0.022)	0.086** (0.017)	0.086** (0.017)
Manual*trend	-0.005** (0.001)	-0.005** (0.001)	-0.005** (0.001)	-0.005** (0.001)	-0.004** (0.001)	-0.004** (0.001)
Diesel	0.267** (0.019)	0.244** (0.017)	0.245** (0.023)	0.278** (0.019)	0.252** (0.016)	0.255** (0.019)
Turbocharged	0.002 (0.054)	0.004 (0.062)		0.014 (0.042)	0.025 (0.049)	
Supercharged	-0.038 (0.042)	-0.007 (0.045)		-0.047 (0.038)	-0.016 (0.038)	
Year Fixed Effects?	Yes	Yes	Yes	Yes	Yes	Yes
Manufacturer Fixed Effects?	No	Yes	Yes	No	Yes	Yes
Observations	12572	12572	12572	12572	12572	12572
R-squared	0.760	0.791	0.746	0.772	0.802	0.760

Notes: ** denotes significance at the one percent level, * at the five percent level, and + at the 10 percent level.

Standard errors are clustered at the manufacturer level.

TABLE 4—TRADE-OFF ESTIMATES FOR LIGHT DUTY TRUCKS

Year	Model 1	Model 2	Model 3	Model 4	Model 5	Model 6
1981	6.9%	6.7%	6.7%	6.6%	6.3%	6.3%
1982	10.2%	9.8%	9.8%	9.8%	9.4%	9.4%
1983	13.2%	12.0%	12.1%	13.0%	11.7%	11.7%
1984	13.6%	12.0%	12.0%	13.6%	11.8%	11.8%
1985	14.6%	13.0%	13.0%	14.0%	12.3%	12.4%
1986	16.9%	15.5%	15.5%	16.1%	14.8%	14.8%
1987	17.4%	16.3%	16.3%	16.8%	15.7%	15.7%
1988	20.5%	19.5%	19.5%	20.1%	19.0%	19.0%
1989	20.7%	20.1%	20.1%	20.1%	19.5%	19.5%
1990	22.1%	21.5%	21.5%	21.6%	21.1%	21.1%
1991	22.2%	21.9%	21.9%	21.7%	21.4%	21.4%
1992	25.8%	25.2%	25.2%	25.0%	24.4%	24.4%
1993	25.8%	25.4%	25.4%	25.0%	24.5%	24.6%
1994	28.3%	27.7%	27.7%	27.5%	26.9%	27.0%
1995	28.3%	28.0%	28.0%	27.5%	27.2%	27.2%
1996	28.8%	28.5%	28.5%	30.1%	29.4%	29.6%
1997	32.4%	32.7%	32.7%	33.6%	33.6%	33.6%
1998	32.8%	32.4%	32.4%	32.3%	31.6%	31.7%
1999	34.2%	34.7%	34.7%	34.1%	34.2%	34.2%
2000	36.7%	37.4%	37.4%	35.3%	35.6%	35.6%
2001	33.8%	34.3%	34.3%	32.6%	32.5%	32.5%
2002	34.7%	35.2%	35.2%	33.2%	33.2%	33.2%
2003	36.9%	36.9%	36.9%	35.3%	34.7%	34.7%
2004	41.0%	41.3%	41.3%	39.0%	38.5%	38.5%
2005	46.3%	46.6%	46.7%	44.0%	43.3%	43.4%
2006	49.2%	49.7%	49.7%	46.9%	46.5%	46.6%

TABLE 5—TECHNOLOGICAL PROGRESS ESTIMATES FOR LIGHT DUTY TRUCKS

	Annual Technological Progress for Cars	Annual Technological Progress for Trucks	Annual Technological Progress for Trucks
Log of the real gasoline price	0.030** (0.009)	0.031 (0.022)	0.043** (0.020)
Percentage Change in Car CAFE standard	0.114+ (0.058)	0.042 (0.145)	
Percentage Change in Truck CAFE Standard			-0.189 (0.194)
Observations	26	26	26
R-squared	0.60	0.17	0.17
Notes: ** denotes significance at the one percent level, * at the five percent level, and + at the 10 percent level.			

TABLE 6—TECHNOLOGICAL PROGRESS AND GAS PRICES

Technological Advance	Car/Truck Mix	Continued Growth	Change in Weight and Engine Power				
			0% Reduction	25% Move to 1980 Levels	50% Move to 1980 Levels	75% Move to 1980 Levels	1980 Levels
No Advance	No Shift in Mix	17.8	25.8	27.6	29.5	31.3	33.1
No Advance	Cars 50%	18.3	26.3	28.2	30.0	31.9	33.8
No Advance	Cars 60%	19.2	27.1	29.0	30.9	32.8	34.7
No Advance	Cars 70%	20.1	27.8	29.8	31.7	33.7	35.6
No Advance	Cars 80%	21.0	28.6	30.6	32.6	34.6	36.6
Average Advance	No Shift in Mix	21.3	33.2	35.6	38.0	40.3	42.7
Average Advance	Cars 50%	22.0	33.9	36.3	38.7	41.1	43.5
Average Advance	Cars 60%	23.1	34.9	37.4	39.8	42.3	44.8
Average Advance	Cars 70%	24.1	35.9	38.5	41.0	43.5	46.0
Average Advance	Cars 80%	25.2	36.9	39.5	42.1	44.7	47.3
75 Percentile Advance	No Shift in Mix	25.5	38.1	40.8	43.5	46.2	48.9
75 Percentile Advance	Cars 50%	26.4	38.6	41.3	44.1	46.8	49.5
75 Percentile Advance	Cars 60%	27.7	39.4	42.2	44.9	47.7	50.5
75 Percentile Advance	Cars 70%	29.0	40.1	43.0	45.8	48.6	51.4
75 Percentile Advance	Cars 80%	30.3	40.9	43.8	46.6	49.5	52.4

TABLE 7—FUEL ECONOMY COUNTERFACTUALS IN 2020 (BUSH STANDARDS)

Technological Advance	Car/Truck Mix	Continued Growth	Change in Weight and Engine Power				
			0% Reduction	25% Move to 1980 Levels	50% Move to 1980 Levels	75% Move to 1980 Levels	1980 Levels
No Advance	No Shift in Mix	20.3	25.8	27.6	29.5	31.3	33.1
No Advance	Cars 50%	20.9	26.3	28.2	30.0	31.9	33.8
No Advance	Cars 60%	21.7	27.1	29.0	30.9	32.8	34.7
No Advance	Cars 70%	22.6	27.8	29.8	31.7	33.7	35.6
No Advance	Cars 80%	23.4	28.6	30.6	32.6	34.6	36.6
Average Advance	No Shift in Mix	24.3	30.9	33.1	35.3	37.5	39.7
Average Advance	Cars 50%	25.0	31.5	33.8	36.0	38.2	40.5
Average Advance	Cars 60%	26.0	32.5	34.8	37.0	39.3	41.6
Average Advance	Cars 70%	27.1	33.4	35.7	38.1	40.4	42.8
Average Advance	Cars 80%	28.1	34.3	36.7	39.1	41.5	44.0
75 Percentile Advance	No Shift in Mix	26.8	34.1	36.5	38.9	41.3	43.7
75 Percentile Advance	Cars 50%	27.4	34.6	37.0	39.5	41.9	44.4
75 Percentile Advance	Cars 60%	28.4	35.4	37.9	40.4	42.9	45.4
75 Percentile Advance	Cars 70%	29.3	36.2	38.7	41.2	43.8	46.3
75 Percentile Advance	Cars 80%	30.2	36.9	39.5	42.1	44.7	47.3

TABLE 8—FUEL ECONOMY COUNTERFACTUALS IN 2016 (OBAMA STANDARDS)

Year	Passenger Cars				Light Duty Trucks			
	OB -		OB -		OB -		OB -	
	Cobb-Douglas	OB - Translog	Matching Model	Cobb-Douglas	OB - Translog	Matching Model	Cobb-Douglas	OB - Translog
1981	5.3%	5.2%	4.1%	6.6%	5.2%	4.3%	6.6%	5.2%
1982	9.0%	8.9%	8.1%	9.3%	7.5%	5.8%	9.3%	7.5%
1983	12.5%	12.5%	12.3%	12.0%	10.2%	10.1%	12.0%	10.2%
1984	14.5%	14.6%	14.1%	12.5%	10.5%	12.1%	12.5%	10.5%
1985	16.7%	17.0%	17.9%	13.0%	11.0%	13.3%	13.0%	11.0%
1986	19.1%	20.0%	20.7%	15.2%	12.9%	15.6%	15.2%	12.9%
1987	19.5%	20.7%	21.8%	15.7%	13.8%	17.8%	15.7%	13.8%
1988	21.8%	23.4%	24.3%	19.2%	18.4%	23.7%	19.2%	18.4%
1989	22.3%	24.2%	24.3%	19.4%	18.0%	20.9%	19.4%	18.0%
1990	23.6%	26.9%	25.8%	20.9%	19.6%	24.3%	20.9%	19.6%
1991	24.3%	28.2%	26.5%	21.0%	20.1%	24.4%	21.0%	20.1%
1992	25.3%	29.6%	27.7%	24.8%	23.7%	30.2%	24.8%	23.7%
1993	28.5%	33.2%	30.8%	24.5%	23.4%	30.1%	24.5%	23.4%
1994	30.1%	36.2%	32.1%	27.6%	26.7%	34.1%	27.6%	26.7%
1995	32.9%	39.3%	34.9%	27.9%	27.3%	33.3%	27.9%	27.3%
1996	33.4%	40.1%	34.7%	28.5%	34.4%	39.7%	28.5%	34.4%
1997	34.4%	41.6%	35.9%	33.0%	37.0%	48.8%	33.0%	37.0%
1998	35.5%	43.9%	36.8%	31.7%	33.1%	42.1%	31.7%	33.1%
1999	34.7%	43.8%	36.9%	34.2%	36.0%	49.7%	34.2%	36.0%
2000	35.5%	44.7%	37.8%	36.7%	37.9%	47.1%	36.7%	37.9%
2001	36.5%	46.9%	39.1%	33.8%	35.8%	48.4%	33.8%	35.8%
2002	37.7%	49.5%	40.8%	34.9%	37.4%	51.2%	34.9%	37.4%
2003	39.2%	52.4%	42.3%	37.2%	40.6%	58.4%	37.2%	40.6%
2004	39.8%	54.3%	43.6%	41.9%	46.6%	68.7%	41.9%	46.6%
2005	40.4%	57.7%	45.0%	47.3%	52.9%	80.3%	47.3%	52.9%
2006	42.7%	61.8%	47.7%	50.1%	55.1%	68.2%	50.1%	55.1%

TABLE 9—ALTERNATIVE ESTIMATORS OF TECHNOLOGICAL PROGRESS FOR PASSENGER CARS AND LIGHT DUTY TRUCKS

	Cobb-Douglas Model				Translog Model			
	Base	Relative Prices	Real Prices	Luxury	Base	Relative Prices	Real Prices	Luxury
ln(Weight)	-0.418** (0.029)	-0.413** (0.031)	-0.413** (0.031)	-0.410** (0.012)	-0.088 (1.268)	-2.288+ (1.355)	-2.288+ (1.355)	-3.495** (0.657)
ln(HP)	-0.262** (0.043)	-0.232** (0.039)	-0.232** (0.039)	-0.255** (0.008)	-2.953** (0.775)	-2.701** (0.650)	-2.701** (0.650)	-1.611** (0.293)
ln(Torque)	-0.045 (0.035)	-0.047 (0.035)	-0.047 (0.035)	-0.063** (0.009)	0.232 (0.683)	0.791 (0.658)	0.791 (0.658)	0.927* (0.401)
ln(Weight) ²					-0.150* (0.060)	-0.134* (0.050)	-0.134* (0.050)	-0.072** (0.024)
ln(HP) ²					-0.150 (0.119)	0.046 (0.131)	0.046 (0.131)	0.244** (0.059)
ln(Torque) ²					-0.017 (0.067)	-0.035 (0.070)	-0.035 (0.070)	0.153** (0.037)
ln(Weight)*ln(HP)					0.480** (0.147)	0.395** (0.112)	0.395** (0.112)	0.241** (0.052)
ln(Weight)*ln(Torque)					-0.052 (0.139)	-0.136 (0.138)	-0.136 (0.138)	-0.352** (0.074)
ln(HP)*ln(Torque)					0.066 (0.057)	0.123+ (0.062)	0.123+ (0.062)	0.029 (0.051)
Manual	0.102** (0.013)	0.101** (0.013)	0.101** (0.013)	0.045** (0.002)	0.087** (0.012)	0.085** (0.012)	0.085** (0.012)	0.073** (0.004)
	-0.004** (0.001)	-0.004** (0.001)	-0.004** (0.001)		-0.003** (0.001)	-0.003** (0.001)	-0.003** (0.001)	-0.002** (0.000)
Diesel	0.229** (0.023)	0.238** (0.028)	0.238** (0.028)	0.195** (0.006)	0.272** (0.033)	0.271** (0.033)	0.271** (0.033)	0.210** (0.007)
Relative Price		-0.031* (0.013)				-0.052** (0.009)		
Real Price			-0.031* (0.013)				-0.052** (0.009)	
Luxury				-0.012** (0.004)				-0.028** (0.004)
Year Fixed Effects?	Yes	Yes	Yes	Yes	Yes	Yes	Yes	Yes
Manufacturer Fixed Effects?	Yes	Yes	Yes	Yes	Yes	Yes	Yes	Yes
Observations	15061	14879	14879	7057	15061	14879	14879	7057
R-squared	0.869	0.869	0.869	0.872	0.879	0.879	0.879	0.882

Notes: ** denotes significance at the one percent level, * at the five percent level, and + at the 10 percent level.

Standard errors are clustered at the manufacturer level.

TABLE 10—TRADE-OFF ESTIMATES FOR PASSENGER CARS CONTROLLING FOR PROXIES OF TECHNOLOGY EXPENDITURES

	Cobb-Douglas Model				Translog Model			
	Base	Relative Prices	Real Prices	Luxury	Base	Relative Prices	Real Prices	Luxury
1981	0.055** (0.010)	0.057** (0.009)	0.057** (0.009)	0.043** (0.007)	0.053** (0.009)	0.054** (0.008)	0.055** (0.008)	0.042** (0.006)
1982	0.096** (0.013)	0.099** (0.012)	0.100** (0.012)	0.074** (0.006)	0.091** (0.011)	0.095** (0.011)	0.097** (0.011)	0.074** (0.006)
1983	0.132** (0.015)	0.135** (0.015)	0.136** (0.015)	0.114** (0.006)	0.125** (0.013)	0.130** (0.013)	0.133** (0.013)	0.109** (0.006)
1984	0.159** (0.013)	0.160** (0.013)	0.163** (0.013)	0.144** (0.006)	0.150** (0.010)	0.154** (0.010)	0.159** (0.010)	0.144** (0.006)
1985	0.185** (0.012)	0.184** (0.011)	0.188** (0.011)	0.166** (0.006)	0.174** (0.009)	0.175** (0.009)	0.182** (0.009)	0.165** (0.006)
1986	0.215** (0.011)	0.214** (0.010)	0.218** (0.010)	0.197** (0.006)	0.201** (0.009)	0.203** (0.009)	0.210** (0.009)	0.196** (0.006)
1987	0.224** (0.012)	0.221** (0.011)	0.227** (0.011)	0.215** (0.006)	0.211** (0.011)	0.209** (0.011)	0.220** (0.011)	0.215** (0.006)
1988	0.246** (0.012)	0.240** (0.012)	0.247** (0.012)	0.236** (0.006)	0.232** (0.013)	0.227** (0.014)	0.240** (0.013)	0.238** (0.006)
1989	0.255** (0.012)	0.248** (0.011)	0.257** (0.011)	0.241** (0.007)	0.240** (0.010)	0.233** (0.011)	0.246** (0.010)	0.241** (0.007)
1990	0.270** (0.012)	0.262** (0.011)	0.270** (0.011)	0.253** (0.007)	0.254** (0.011)	0.245** (0.011)	0.259** (0.010)	0.253** (0.007)
1991	0.281** (0.014)	0.271** (0.011)	0.280** (0.012)	0.258** (0.007)	0.265** (0.012)	0.254** (0.011)	0.268** (0.011)	0.259** (0.007)
1992	0.294** (0.016)	0.283** (0.014)	0.292** (0.015)	0.273** (0.007)	0.276** (0.014)	0.262** (0.014)	0.278** (0.014)	0.275** (0.007)
1993	0.322** (0.018)	0.310** (0.015)	0.320** (0.016)	0.296** (0.007)	0.302** (0.015)	0.286** (0.015)	0.303** (0.015)	0.295** (0.007)
1994	0.340** (0.018)	0.327** (0.016)	0.338** (0.016)	0.316** (0.007)	0.320** (0.016)	0.302** (0.016)	0.321** (0.015)	0.317** (0.007)
1995	0.371** (0.018)	0.356** (0.015)	0.368** (0.016)	0.338** (0.007)	0.348** (0.016)	0.327** (0.015)	0.347** (0.015)	0.337** (0.007)
1996	0.378** (0.015)	0.364** (0.013)	0.374** (0.013)	0.346** (0.007)	0.356** (0.013)	0.337** (0.013)	0.355** (0.013)	0.349** (0.007)
1997	0.392** (0.019)	0.375** (0.015)	0.386** (0.016)	0.349** (0.007)	0.370** (0.015)	0.347** (0.015)	0.366** (0.015)	0.353** (0.007)
1998	0.410** (0.021)	0.393** (0.017)	0.403** (0.018)	0.368** (0.008)	0.388** (0.018)	0.364** (0.017)	0.382** (0.017)	0.371** (0.008)
1999	0.410** (0.021)	0.388** (0.016)	0.405** (0.018)	0.360** (0.008)	0.389** (0.018)	0.358** (0.017)	0.385** (0.017)	0.366** (0.008)
2000	0.421** (0.022)	0.398** (0.017)	0.414** (0.018)	0.379** (0.008)	0.401** (0.019)	0.368** (0.018)	0.394** (0.018)	0.385** (0.008)
2001	0.434** (0.023)	0.414** (0.020)	0.427** (0.020)	0.390** (0.008)	0.413** (0.020)	0.383** (0.020)	0.406** (0.020)	0.397** (0.008)
2002	0.450** (0.025)	0.426** (0.021)	0.442** (0.021)	0.407** (0.008)	0.429** (0.022)	0.392** (0.022)	0.419** (0.021)	0.415** (0.008)
2003	0.467** (0.028)	0.444** (0.024)	0.458** (0.024)	0.425** (0.008)	0.446** (0.025)	0.410** (0.025)	0.433** (0.024)	0.433** (0.008)
2004	0.475** (0.026)	0.452** (0.023)	0.467** (0.023)	0.442** (0.008)	0.453** (0.024)	0.415** (0.023)	0.439** (0.023)	0.449** (0.008)
2005	0.489** (0.026)	0.465** (0.022)	0.481** (0.023)	0.450** (0.008)	0.467** (0.024)	0.427** (0.023)	0.454** (0.023)	0.456** (0.008)
2006	0.511** (0.029)	0.483** (0.024)	0.500** (0.024)	0.460** (0.008)	0.486** (0.027)	0.438** (0.025)	0.467** (0.025)	0.461** (0.008)
Manufacturer FEs?	Yes	Yes	Yes	Yes	Yes	Yes	Yes	Yes
Observations	14390	14214	14214	14390	14214	14214	6833	6833
R-squared	0.879	0.879	0.879	0.886	0.886	0.886	0.876	0.887

Notes: ** denotes significance at the one percent level, * at the five percent level, and + at the 10 percent level.
Standard errors are clustered at the manufacturer level.

TABLE 11—TECHNOLOGICAL PROGRESS ESTIMATES FOR PASSENGER CARS CONTROLLING FOR PROXIES OF TECHNOLOGY EXPENDITURES

	Cobb-Douglas Model			Translog Model		
	Base	Relative Prices	Real Prices	Base	Relative Prices	Real Prices
ln(Weight)	-0.356** (0.042)	-0.340** (0.049)	-0.340** (0.049)	1.412 (1.215)	1.279 (1.129)	1.279 (1.129)
ln(HP)	-0.071+ (0.041)	-0.067 (0.042)	-0.067 (0.042)	-1.270* (0.596)	-1.442* (0.656)	-1.442* (0.656)
ln(Torque)	-0.303** (0.052)	-0.307** (0.052)	-0.307** (0.052)	-0.807 (0.841)	-0.580 (0.836)	-0.580 (0.836)
ln(Weight) ²				0.054 (0.144)	0.059 (0.151)	0.059 (0.151)
ln(HP) ²				-0.243** (0.066)	-0.228** (0.062)	-0.228** (0.062)
ln(Torque) ²				-0.384** (0.129)	-0.396** (0.127)	-0.396** (0.127)
ln(Weight)*ln(HP)				-0.065 (0.093)	-0.059 (0.095)	-0.059 (0.095)
ln(Weight)*ln(Torque)				0.452** (0.115)	0.431** (0.124)	0.431** (0.124)
ln(HP)*ln(Torque)				0.216 (0.267)	0.231 (0.277)	0.231 (0.277)
Manual	0.094** (0.016)	0.093** (0.016)	0.093** (0.016)	0.086** (0.017)	0.084** (0.018)	0.084** (0.018)
Manual*Trend	-0.005** (0.001)	-0.005** (0.001)	-0.005** (0.001)	-0.004** (0.001)	-0.004** (0.001)	-0.004** (0.001)
Diesel	0.245** (0.023)	0.248** (0.020)	0.248** (0.020)	0.255** (0.019)	0.259** (0.018)	0.259** (0.018)
Relative Price					-0.039+ (0.019)	
Real Price		-0.029 (0.021)	-0.029 (0.021)			
Luxury			0.022* (0.009)			0.006 (0.009)
Year Fixed Effects?	Yes	Yes	Yes	Yes	Yes	Yes
Manufacturer Fixed Effects?	Yes	Yes	Yes	Yes	Yes	Yes
Observations	12550	12371	12371	12371	12371	8213
R-squared	0.796	0.800	0.800	0.809	0.809	0.752

Notes: ** denotes significance at the one percent level, * at the five percent level, and + at the 10 percent level. Standard errors are clustered at the manufacturer level.

TABLE 12—TRADE-OFF ESTIMATES FOR LIGHT DUTY TRUCKS CONTROLLING FOR PROXIES OF TECHNOLOGY EXPENDITURES

	Cobb-Douglas Model				Translog Model			
	Base	Relative Prices	Real Prices	Luxury	Base	Relative Prices	Real Prices	Luxury
1981	0.067** (0.011)	0.068** (0.010)	0.068** (0.010)	0.053** (0.007)	0.063** (0.011)	0.064** (0.010)	0.065** (0.010)	0.048** (0.007)
1982	0.098** (0.016)	0.099** (0.016)	0.100** (0.017)	0.081** (0.007)	0.094** (0.015)	0.095** (0.014)	0.097** (0.015)	0.077** (0.007)
1983	0.120** (0.015)	0.122** (0.015)	0.123** (0.016)	0.113** (0.006)	0.117** (0.015)	0.118** (0.015)	0.120** (0.016)	0.108** (0.006)
1984	0.119** (0.016)	0.119** (0.016)	0.122** (0.016)	0.100** (0.007)	0.118** (0.016)	0.117** (0.015)	0.121** (0.016)	0.097** (0.007)
1985	0.130** (0.009)	0.130** (0.008)	0.133** (0.008)	0.126** (0.008)	0.123** (0.012)	0.123** (0.011)	0.128** (0.010)	0.116** (0.008)
1986	0.155** (0.011)	0.156** (0.011)	0.160** (0.010)	0.154** (0.007)	0.148** (0.014)	0.149** (0.013)	0.154** (0.012)	0.145** (0.007)
1987	0.162** (0.011)	0.163** (0.010)	0.169** (0.009)	0.156** (0.008)	0.157** (0.013)	0.158** (0.012)	0.166** (0.010)	0.148** (0.007)
1988	0.195** (0.010)	0.194** (0.010)	0.201** (0.008)	0.186** (0.008)	0.190** (0.011)	0.189** (0.011)	0.199** (0.008)	0.180** (0.008)
1989	0.201** (0.009)	0.199** (0.009)	0.207** (0.007)	0.195** (0.008)	0.195** (0.009)	0.193** (0.010)	0.203** (0.008)	0.190** (0.008)
1990	0.215** (0.018)	0.213** (0.018)	0.221** (0.013)	0.198** (0.008)	0.211** (0.020)	0.208** (0.020)	0.219** (0.016)	0.193** (0.008)
1991	0.219** (0.010)	0.216** (0.011)	0.224** (0.008)	0.221** (0.008)	0.214** (0.013)	0.209** (0.013)	0.220** (0.011)	0.216** (0.008)
1992	0.252** (0.016)	0.248** (0.017)	0.257** (0.012)	0.240** (0.008)	0.244** (0.016)	0.238** (0.017)	0.250** (0.013)	0.236** (0.008)
1993	0.255** (0.025)	0.251** (0.026)	0.261** (0.021)	0.234** (0.008)	0.247** (0.025)	0.240** (0.027)	0.253** (0.022)	0.229** (0.008)
1994	0.277** (0.024)	0.273** (0.026)	0.283** (0.020)	0.254** (0.008)	0.270** (0.023)	0.263** (0.025)	0.278** (0.019)	0.251** (0.008)
1995	0.280** (0.030)	0.275** (0.033)	0.286** (0.025)	0.256** (0.008)	0.273** (0.029)	0.265** (0.031)	0.280** (0.025)	0.252** (0.008)
1996	0.284** (0.029)	0.281** (0.031)	0.291** (0.024)	0.264** (0.009)	0.296** (0.019)	0.291** (0.021)	0.304** (0.016)	0.281** (0.009)
1997	0.327** (0.020)	0.321** (0.025)	0.332** (0.017)	0.311** (0.011)	0.336** (0.011)	0.327** (0.015)	0.341** (0.009)	0.326** (0.011)
1998	0.324** (0.026)	0.322** (0.027)	0.332** (0.020)	0.308** (0.010)	0.317** (0.024)	0.312** (0.025)	0.326** (0.019)	0.304** (0.010)
1999	0.347** (0.031)	0.334** (0.034)	0.350** (0.024)	0.319** (0.009)	0.342** (0.032)	0.326** (0.034)	0.347** (0.026)	0.312** (0.009)
2000	0.374** (0.027)	0.367** (0.032)	0.382** (0.022)	0.350** (0.009)	0.356** (0.029)	0.345** (0.033)	0.365** (0.024)	0.330** (0.009)
2001	0.343** (0.027)	0.339** (0.031)	0.352** (0.023)	0.328** (0.009)	0.326** (0.028)	0.317** (0.031)	0.335** (0.024)	0.307** (0.009)
2002	0.352** (0.028)	0.345** (0.032)	0.361** (0.022)	0.336** (0.009)	0.332** (0.030)	0.321** (0.033)	0.342** (0.024)	0.311** (0.009)
2003	0.369** (0.038)	0.361** (0.043)	0.374** (0.034)	0.345** (0.009)	0.347** (0.039)	0.335** (0.042)	0.352** (0.034)	0.320** (0.009)
2004	0.413** (0.038)	0.385** (0.041)	0.399** (0.032)	0.394** (0.009)	0.385** (0.039)	0.353** (0.043)	0.371** (0.035)	0.362** (0.009)
2005	0.467** (0.030)	0.460** (0.034)	0.475** (0.025)	0.460** (0.009)	0.435** (0.030)	0.422** (0.033)	0.443** (0.025)	0.421** (0.009)
2006	0.497** (0.033)	0.489** (0.038)	0.505** (0.028)	0.486** (0.009)	0.466** (0.031)	0.450** (0.036)	0.472** (0.026)	0.451** (0.009)
Manufacturer FEs?	Yes	Yes	Yes	Yes	Yes	Yes	Yes	Yes
Observations	12565	12386	12386	8213	12565	12386	12386	8213
R-squared	0.791	0.795	0.795	0.748	0.802	0.806	0.806	0.762

Notes: ** denotes significance at the one percent level, * at the five percent level, and + at the 10 percent level.
Standard errors are clustered at the manufacturer level.

TABLE 13—TECHNOLOGICAL PROGRESS ESTIMATES FOR LIGHT DUTY TRUCKS CONTROLLING FOR PROXIES OF TECHNOLOGY EXPENDITURES

FIGURE 1. PENETRATION OF ENGINE-RELATED TECHNOLOGIES THAT WOULD SHIFT THE PRODUCTION POSSIBILITIES FRONTIER

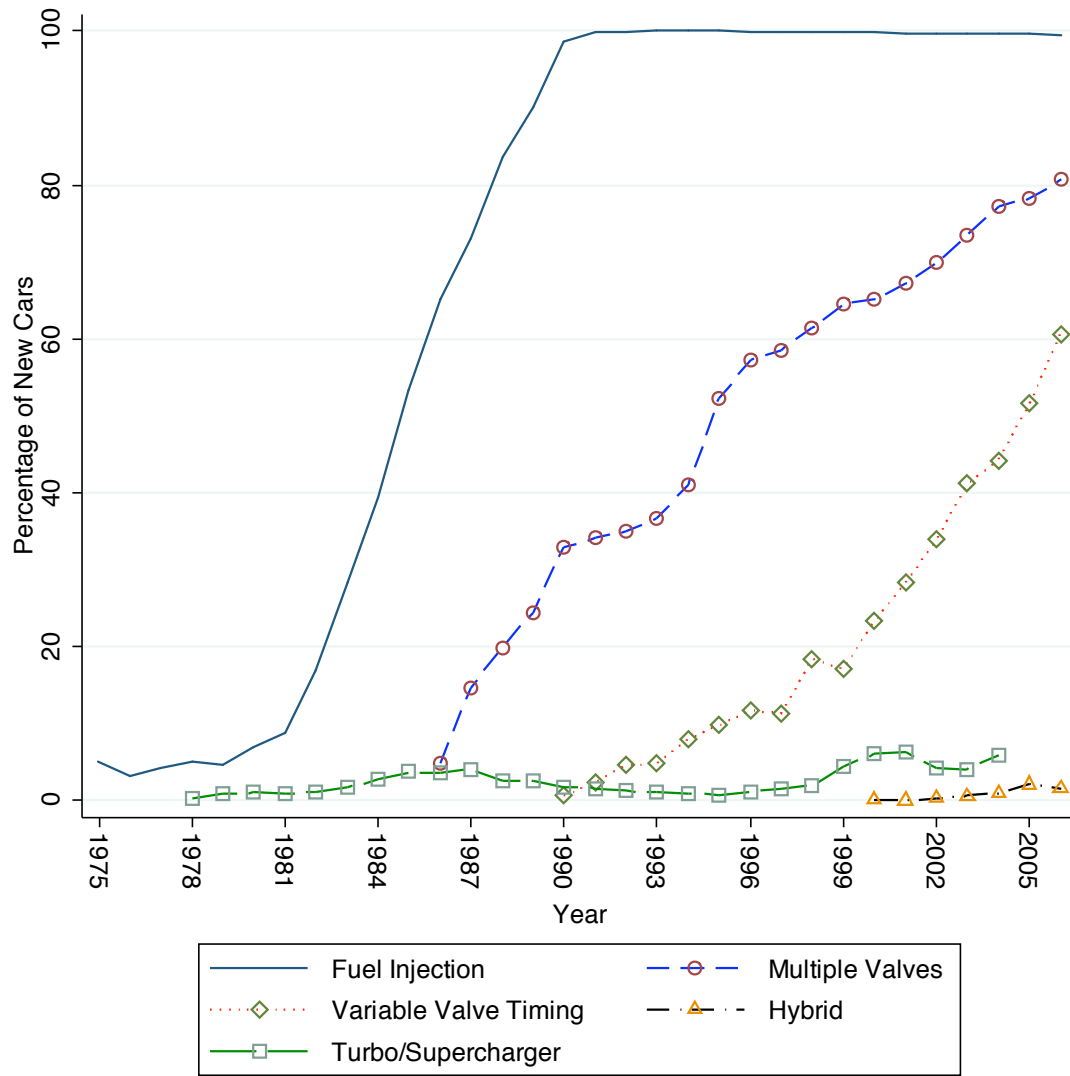


FIGURE 2. PENETRATION OF NON-ENGINE-RELATED TECHNOLOGIES THAT WOULD SHIFT THE PRODUCTION POSSIBILITIES FRONTIER

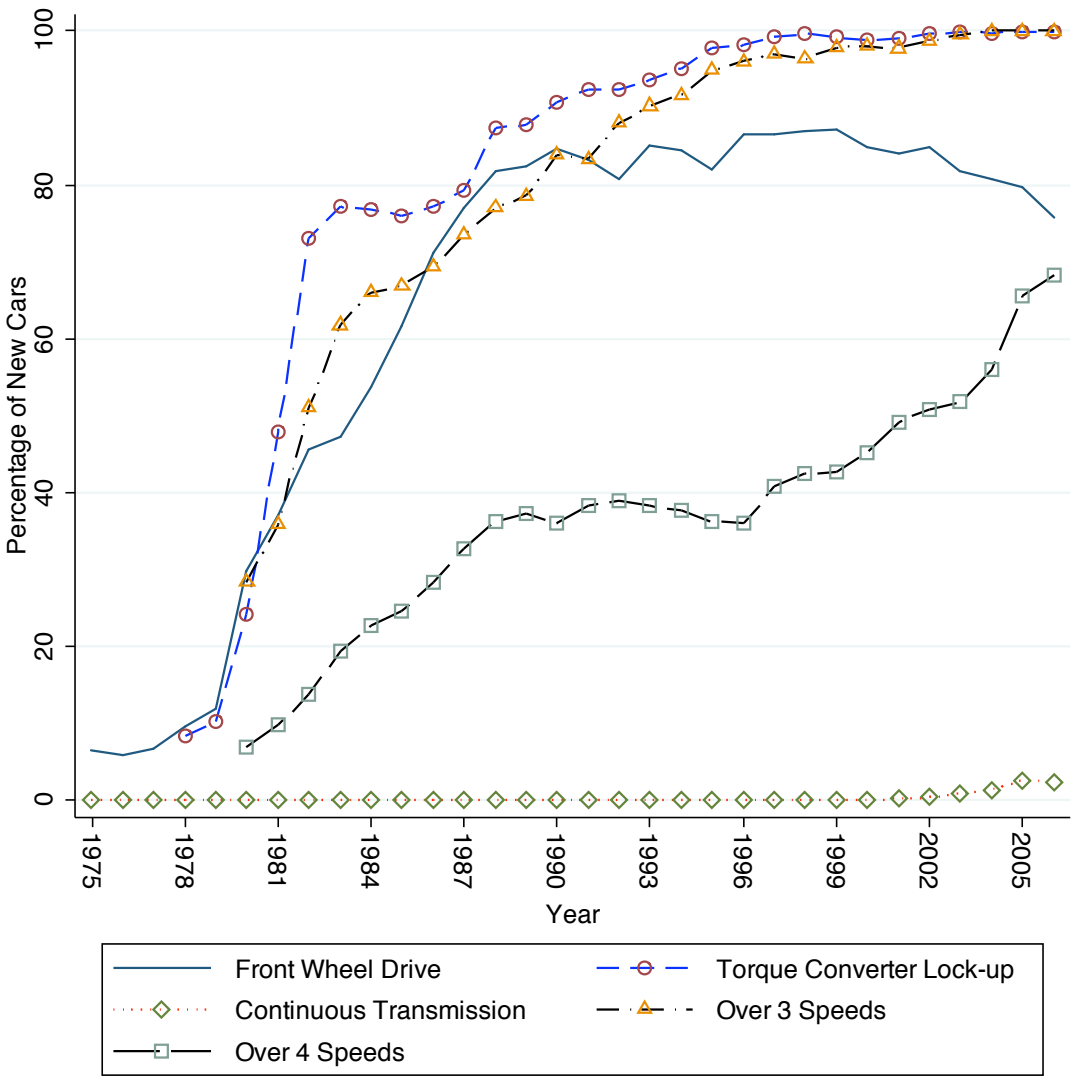


FIGURE 3. FUEL ECONOMY VERSUS WEIGHT, 1980 AND 2006, PASSENGER CARS

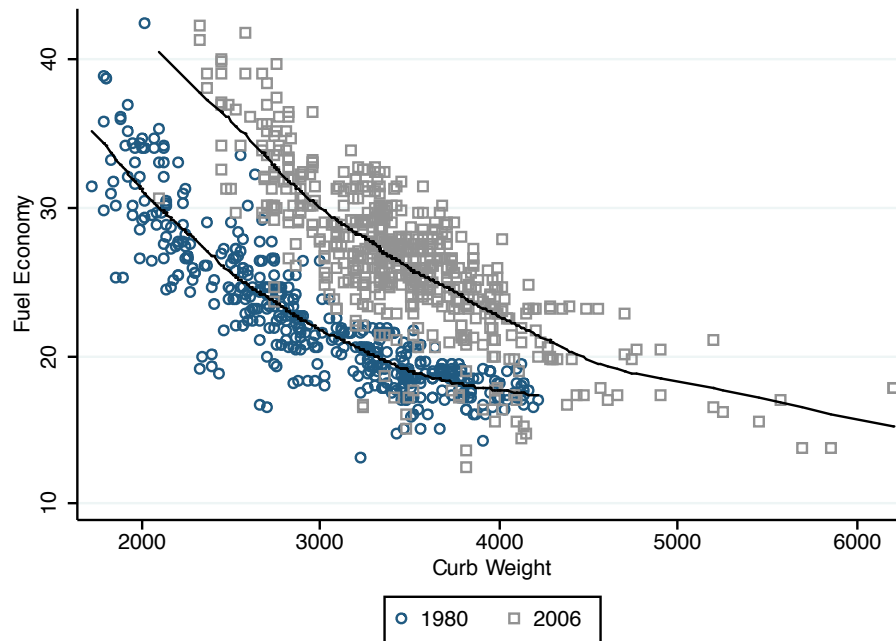


FIGURE 4. FUEL ECONOMY VERSUS HORSEPOWER, 1980 AND 2006, PASSENGER CARS

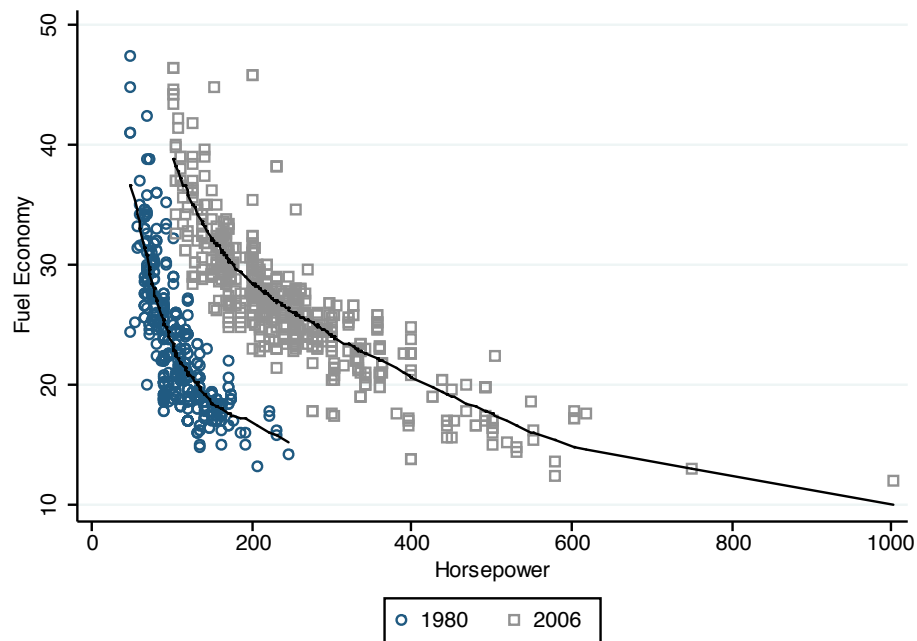


FIGURE 5. FUEL ECONOMY VERSUS WEIGHT, 1980 AND 2006, LIGHT DUTY TRUCKS

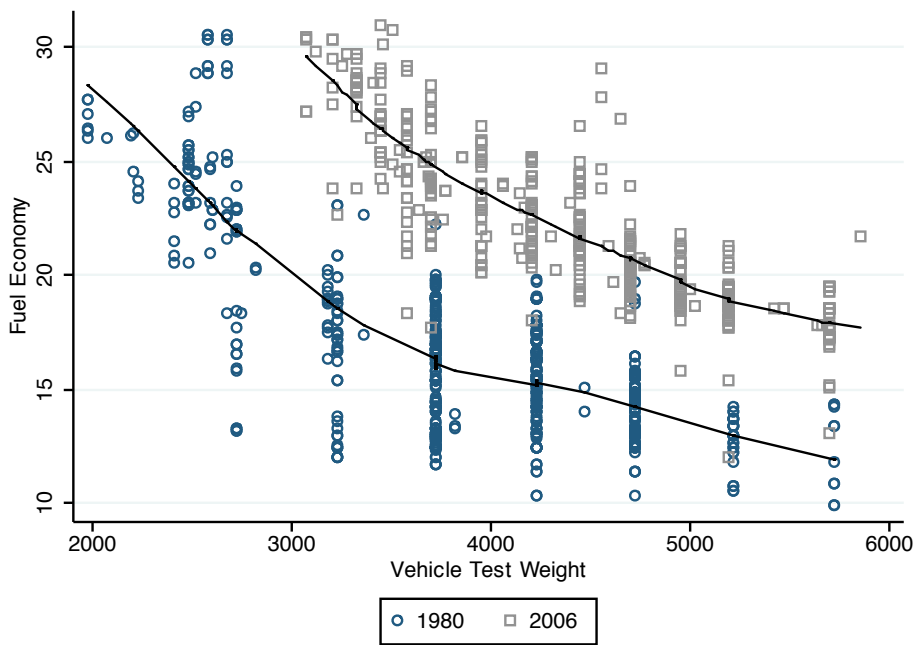


FIGURE 6. FUEL ECONOMY VERSUS HORSEPOWER, 1980 AND 2006, LIGHT DUTY TRUCKS

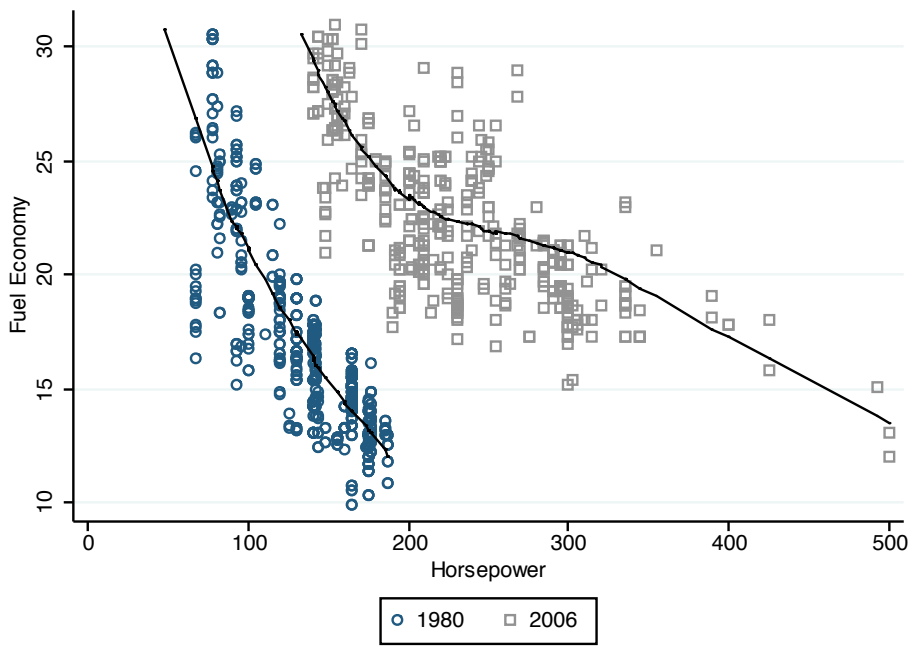


FIGURE 7. PASSENGER CAR ANNUAL TECHNOLOGICAL PROGRESS AND ANNUAL CAFE CHANGES

